

Discovering  
Palermo

PA  
LER  
M<sub>e</sub>  
PRO  
VIN  
CIA





## The Regional Province of Palermo



**T**he Regional Province of Palermo, which I am honoured to represent, would like to extend a warm welcome and invite you to visit the entire territory of Palermo, in the sound knowledge of its great artistic, historic and architectural patrimony

and the natural beauty of its landscapes.

You will find useful information in this guide-book of Palermo, such as suggestions of the monuments and sites to visit, celebrations and other events on the Calendar, as well as, useful telephone numbers should you need them.

Furthermore, I would really like to stress our loved Sicily's cult for hospitality and the natural warmth and affection of the Sicilians, their ability to transmit humanity, kindness and solidarity. Here we are talking about our heritage of values – of a humanity to which we belong – which have been inherited, as we have inherited the very monuments and wealth of beauty that enriches our land.

As President of this territorial authority together with the competences which are the responsibility of the Province, my pledge and that of the entire administration is aimed at the creation and improvement of our services and infrastructures, in order to raise the standards of our tourist offer as we are convinced that the tourist sector is of strategic importance to the development of our territory and its wealth.

As an old hotelier friend of mine likes to repeatedly remind me, the objective of anyone working in the tourist sector is not so much to have a large number of tourists today but to work to ensure that they will come back.

Thus, I would like to hope and wish that you spend happy days in our province and above all that you return, as this can only mean that not only have you not gotten round to admiring all of our beautiful sites, but also and above all, that you have enjoyed yourselves in a climate of authentic hospitality.

**Giovanni Avanti**

*PRESIDENTE OF THE  
REGIONAL PROVINCE OF PALERMO*



# Contents

<b>Background information</b>	<b>2</b>
Geography	2
History	2
Art	3
Handicrafts and traditions	5
Cuisine	5
<b>Discovering Palermo</b>	<b>6</b>
1. Must-see Palermo	6
2. The Kalsa	13
3. From the Cala to the Capo	18
4. From the Albergheria to the Piano della Cattedrale	23
More still...	26
The museums	27
Curious ant theme-based Palermo	28
<i>Villas and Gardens</i>	28
<i>Serpotta's stuccoes</i>	29
<i>The modern city</i>	30
<i>Tunnels and mysteries</i>	31
<i>Where to eat</i>	32
<i>The old markets</i>	34
<i>Palermo for children</i>	35
<i>Palermo's seaside resorts</i>	36
The environs	38
<b>• Practical information</b>	<b>40</b>
<b>• Where to stay</b>	<b>43</b>
<b>• Index</b>	<b>48</b>

## Key



unmissable  
sights



further information  
and curiosities



a detour



# Background information

A necessary part of the Grand Tour undertaken in the 18C and 19C by writers, poets and artists, attracted by the city's oriental atmosphere and its eclectic and varied sights, Palermo has managed to preserve the fascination of the peoples who lived here: Phoenicians, Romans, Byzantines, Arabs, Normans, Swabians, Angevins and Spaniards all left their imprint on the city's art and life.

## Geography

Palermo – which, with a population of nearly 700,000, is one of the largest cities in Italy – is located in a beautiful position in the centre of a large bay enclosed by the imposing headland of Monte Pellegrino to the north and Capo Zafferano to the south. Behind it lies a small plain known as *Conca d'Oro* (Golden Basin) to the fertility of its land where citrus and olive groves thrive. An important feature of the layout of the city's historic centre is the intersection of Corso Vittorio Emanuele and Via Maqueda, determining the division of the city into four districts, called **mandamenti**.



## History

Panormus (from the Greek “all harbour”) was founded by the **Phoenicians** in the 7C BC on a site that was already densely populated thanks to its mild climate and fertile soil. In 254 BC it was conquered by the **Romans**, few traces of whom are to be found in the city. Its golden age began under the **Arab rule** (9C), when Balarm became one of the main Islamic centres in the West. As the city expanded, new districts grew up, such as the Kalsa, a fortified quarter on the sea and the emir's residence.



In 1072 the city fell into the hands of the **Normans** under Count Roger de Hauteville, who, however, allowed merchants, craftsmen and the Muslim (and Jewish) population in general to continue to freely practise their occupations. This led to the development of the Arab-Norman style in art and architecture.

In the 13C Palermo and Sicily were taken over by Frederick II of Swabia (1212). The Swabians were then followed by the Angevins, who were expelled by the powerful local families (the Ventimiglia, Chiaramonte and Sclafani) with the War of the Vespers (1282–1302), after which it was governed by Frederick III of Aragon. From the 15C to the 17C Sicily was an **Aragonese province** ruled by a viceroy: its institutions, culture and customs were modelled on those of Spain.



In 1713, as a result of the Treaty of Utrecht, which ended the War of the Spanish Succession, Victor Amadeus of Savoy became king of Sicily, a title that passed to Charles VI of Hapsburg after only five years. Vienna was a long way off and real power was in the hands of the barons, the agrarian aristocracy

that started an intense building activity with the construction of villas in Bagheria, in the Piana dei Colli and towards Monreale.

In 1735 the Spaniards regained power under Charles of **Bourbon** and Sicily was once again ruled by a viceroy. In 1815 the Congress of Vienna united the crowns of Naples and Palermo, thus establishing the Kingdom of the Two Sicilies, which lasted until 1860, when **Garibaldi** landed at Marsala with his Thousand and, after a plebiscite, Sicily was annexed to the newly founded Kingdom of Italy.

A leap forward of nearly a 100 years brings us to 1943, when, during the Allied invasion of Sicily, code-named Operation Husky, Palermo was heavily bombed, seriously damaging its historic centre.

After the end of the war, in 1946, a royal decree approved the statute of the Sicilian Region, which conferred autonomous government on the island, one of the five Italian "regions of special statute".

## Art

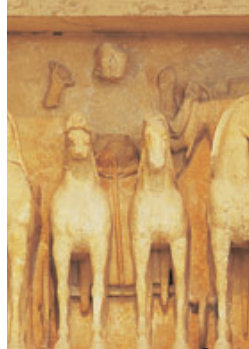
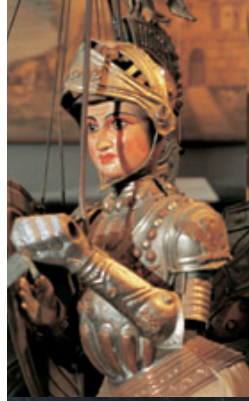
One of the most outstanding periods of Sicilian art was the remarkable stylistic fusion represented by **Arab-Norman** architecture (12C) with buildings combining Islamic, Romanesque and Byzantine elements. In the large churches the classical structure (the basilican model of the Benedictine type, towers and portals) is wedded to Byzantine decoration (mosaics) and Islamic forms (horseshoe arches, arabesques and honeycomb work).

In civil architecture, the Palazzo Chiamomonte in Piazza Marina marked the birth of the Chiamomonte style, with solid, austere buildings sparsely adorned with elegant decorative motifs.

The arrival of the Aragonese at the end of the 14C brought Sicily into the Spanish sphere and led to the introduction of **Catalan Gothic**, characterized by sobriety, a sense of proportion that favoured breadth – rather than the verticality of northern Gothic – and ornate and elegant decoration. This style is wonderfully expressed by Matteo Carnelivari's works: Palazzo Abatellis, Palazzo Ajutamicristo and the church of Santa Maria della Catena.

Rather than in architecture – where it was necessary to wait until the first half of the 16C – the **Renaissance** arrived in Sicily through sculpture thanks to the works of two outsiders: the Dalmatian Francesco Laurana (1430-1502) and Domenico Gagini from Bissone on Lake Lugano (1420-92), who, with his son Antonello (1478-1536) opened a flourishing workshop in Palermo, where elegant works were executed in Carrara marble.

From the end of 16C onwards art felt the effect of the Counter-Reformation (founded in 1540 by the Spaniard Ignatius Loyola, the Company of Jesus was very powerful in Sicily) and the exuberance of







**Baroque**, which in Palermo was influenced by the current styles in Rome, while in other parts of the island it assumed more Hispanic forms. One of the leading architects was Giacomo Amato (1643-1732), who introduced the models of Roman Baroque to Palermo (Santa Teresa alla Kalsa, Santa Maria della Pietà). Baroque opulence is also expressed in the decoration covering the interiors of churches and chapels, especially the refined technique of the *marmi mischi*, which consists of inlaid marble of various colours creating remarkable effects. With regard to painting, the most outstanding figure was Pietro Novelli (1603-47), who was influenced by both Caravaggio (who stayed in Sicily) and Van Dyck, whose Virgin of the Rosary is in the Oratorio del Rosario in the church of San Domenico. Around the end of the 17C and during the 18C a lighter, more playful style developed: known as **Rococo**, it was very much in vogue for the decoration of the numerous villas and palaces built by the aristocracy in this period. Leading painters included the Flemish artist Guglielmo Borremans (1672-1744), Vito d'Anna (1718-69) and Gioacchino Martorana (1735-79). It was also a remarkable period for sculpture thanks to the talent of Giacomo Serpotta (1652-1732), who ennobled the art of the stucco with extremely refined works (see p. 29). At the end of 18C the **Neoclassical** style caught on in Sicily too, partly as a result of the excavations of Herculaneum and Pompeii promoted by the Bourbons. Important exponents were the sculptors Venanzio Marvuglia (1729-1814) and Ignazio Marabitti (1719-97) and the painter Giuseppe Velasco (1750-1827). In the 19C the unification of Italy led to a new concept of public space that was reflected by the construction of the two largest theatres in Palermo: the Teatro Massimo (1864-97) and the Teatro Politeama (1867-74). In 1885, as part of the urban development plan intended to renew the city's old quarters, the opening up of Via Roma radically changed the appearance of the medieval historic centre. The city's social hub moved to Via Ruggero Settimo and Viale della Libertà, where fine houses were built in the **Stile Liberty** (the Italian equivalent of Art Nouveau), featuring decorative elements in wrought iron and glass, floral motifs and integrated design of the structure, furnishings and decoration. At the end of the century, it was Ernesto Basile (1857-1932) – the son of the architect, Giovanni Battista Basile, who designed the Teatro Massimo – who dominated what had become one of the centres of the belle époque, animated by the ambitions of two powerful entrepreneurial families: the Florio and the Whitakers. World War I marked the beginning of a decline in local business activity and also the end of the prolific Art Nouveau period. The heavy damage inflicted by the air raids of 1943 caused the abandonment of the city's historic centre in favour of the outskirts, where uncontrolled development took place.

From the 1980s onwards there was renewed interest in the centre, which, in the following decades, led to an intense process of upgrading and renovation of many buildings for both residential and cultural purposes.

## Handicrafts and traditions

UNESCO has proclaimed the Sicilian puppet theatre a masterpiece of the oral and intangible heritage of humanity. The most classic and codified forms of the puppet theatre date from the mid-19C, when stories of bandits and saints, Shakespearian dramas and the popular tales of the paladins of France were staged. The arrival of the puppets was a major event in the lives of the poorer classes: the puppeteers took advantage of the suspense element by spreading the performances over a number of evenings, necessarily ending with a battle scene. Some of the puppets were adapted to create special effects, such as losing their heads or splitting into two (only to become whole again as if by magic in the following performance), or witches whose faces could be transformed from an angelic expression to a death mask.

There are two types of puppet: Palermitan and Catanese. The former are between 80 and 100 cm in height, weigh 8 kg, have jointed knees and can draw and sheathe their swords. Their relatively limited weight allows the puppeteer to control them easily: they are very agile and with fast, nimble movements seem to dance on the stage as they deliver and ward off sword blows in the duels. The puppets are operated from the sides, so the puppeteer stretches out his arm to reach the centre of the stage.

The Catanese puppets are 140 cm in height and weigh between 16 and 20 kg. Their legs are unjointed and their swords are always drawn, ready to deal blows. Their movements are more composed and emphatic, their steps and sword blows slower and more realistic. In Palermo the puppet theatre is linked to the Cuticchio family, who also make the puppets, complex objects that require many days of work to complete (on average, the armour consists of 35 hand-made pieces that have to be fitted together).

## Cuisine

Discussion of the Sicilian cuisine takes us on a journey back in time, conjuring up images of different places. The dishes comprise a wide variety of foodstuffs, spices and flavours, reminding us that the island has always attracted peoples from near and far. Not only has domination by numerous foreign powers left traces in the lifestyle of the Sicilian people but it has also had a profound impact on the landscape thanks to the crops they introduced.

In the western part of the island, where the Arab influence and the traditions of the court left their mark, the cuisine is complex, with audacious combinations. Drawing an analogy with the landscape, the austere simplicity of the Greek temples is replaced by the refinement – worthy of the Arabian Nights! – of Arab-Norman Palermo. The Arabs introduced citrus fruit, sugar, cinnamon, saffron and rice, which are used here in different ways from further north, but are equally widespread – the arancine, for example, have become a symbol of the island's cuisine and are often the first speciality that visitors encounter.

For further details of Palermo's cuisine, see p. 32.





# Discovering Palermo



Ph Pietro Lupo - Palermo 2009

*For opening times and conditions of admission consult the publications by the Regional Province of Palermo.*

## 1. Must-see Palermo

*A two-day tour starting from the Palazzo dei Normanni. The buildings described, apart from the Zisa and Monreale Cathedral, are located in the historic centre and may be reached on foot.*

### **Palazzo Reale or dei Normanni**

*Piazza Indipendenza, tel. 091.6262833.*

Always the seat of political power, this imposing building, now housing the Sicilian Regional Assembly, stands on the site of the residence of the emirs, which was linked to the sea by the Cassaro. In the 12C the Norman court resided here: from this period remain the central part of the palace and the



Torre Pisana, topped by the dome of the observatory installed in 1791. After a period of neglect, the building was restored in the 17C by the Spanish viceroys: dating from this era are the impressive south façade and the splendid courtyard. The entrance with the monumental staircase was built in the 18C.



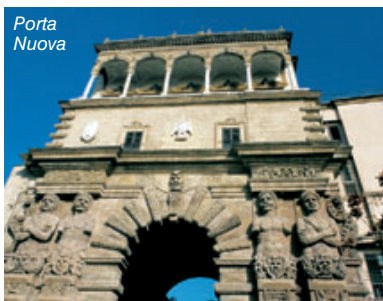
### **Cappella Palatina**

1st floor. Tel. 091.6262833

Built by Roger II c. 1130, this famous chapel is noted for the remarkable harmony between its architecture and its decoration. Particularly striking are the mosaics, made of enamel and gold leaf incorporated in glass tesserae, a technique that makes them especially brilliant. They recount stories from the Old Testament (nave) and episodes from the lives of Christ (sanctuary) and saints Peter and Paul (aisles). Part of the mosaics in the nave and the apsidal area are 18C-19C restorations.

the only surviving Norman rooms: the Sala dei Venti, formerly a courtyard, and the **Sala di Ruggero II**, where the mosaics depict hunting scenes alternating with symbolic animals such as the peacock (eternity) and the lion (majesty and strength), set among palms and citrus trees.

Beyond the nearby **Porta Nuova**, built in the 16C to celebrate the entrance of Charles V into Palermo, lies Corso Vittorio Emanuele; formerly called the **Càssaro** (from the Arabic *Kasr*, "castle"), it leads straight to the sea.



Porta Nuova



In the scene representing the *Separation of the Earth from the Waters*, the terrestrial globe is a sphere of water with, in the centre, three areas of land (America and Oceania are missing) divided by strips of sea forming a Y, the symbol of the Trinity. In the *Nativity* (right of sanctuary), the Magi are shown both during their journey (on the left) and before the Child, while Joseph, to the left of Mary, is sitting on a typical Sicilian chair.



Cloister of San Giovanni degli Eremiti

Near to the sanctuary there is a splendid ambo and a slender and richly decorated paschal candelabrum. The remarkable wooden ceiling of the nave, the work of North African artists, contains various representations of everyday life: scenes of the court and hunting, drinkers, dancers, chess players and animals.

### **Royal Apartments**

2nd floor. Besides the Sala d'Ercole (where the Regional Assembly meets) and other more recent rooms, it is possible to visit



### **San Giovanni degli Eremiti**

Via dei Benedettini, tel. 091.6515019. This complex, comprising a church and the remains of a Benedictine monastery, is an enchanting oasis of peace with its luxuriant garden of palms, agaves, bougainvilleas and orange and mandarin trees. The interior of the church, which Roger II had built in the 12C by Islamic workers, is simple and unadorned and extends to the right with an older building, perhaps a mosque. All that remains of the monastery is the

delightful 13C **cloister** with coupled columns.

### **Villa Bonanno**

In this public garden are the remains of Roman houses where mosaics depicting the seasons and Orpheus, now in the Museo Archeologico Regionale, were found.



### **Cattedrale**

Tel. 091.6726085 - 329.3977513.

This imposing edifice, built towards the end of the 12C over pre-existing structures, has been much altered, especially in the 18C, the period from which the majestic dome and the interior date. The original style is visible in the apses, which have preserved their geometric decoration, while the porch on the south side, in Catalan Gothic style, is 15C. The façade giving onto Via Matteo Bonello, which has kept its 14C/15C appearance, is linked by two arches to the campanile on the other side of the street.

To the north of the cathedral is the **Loggia dell'Incoronazione** (late 16C), where traditionally the kings

appeared before the people after being crowned.

The cathedral houses the tombs of Frederick II, his wife, Constance of Aragon, Henry VI, emperor of Germany, Roger II and his daughter Constance of Hauteville. From the south transept there is access to the treasury and crypt.



Attesting to the varying fortunes of the cathedral, which was an early-Christian basilica, then a mosque, and then a Christian church again under the Normans, is the first column to the right of the south porch, bearing a passage from the Koran.

Corso Vittorio Emanuele proceeds past the Renaissance Palazzo Castrone-Santa Ninfa (no. 452, on the right), with a fine courtyard containing a fountain; on the left is the former Jesuit college (16C), now housing the Regional Library, and, again on the right, the church of the **Santissimo Salvatore**, built in the 17C by Paolo Amato, now used as a concert hall.

Next is **Piazza Bologna**, surrounded by 18C palaces including the Palazzo Alliata di Villafranca, adorned with the arms of the Bologna family, who, in 1566, laid out the square, where a statue of Charles V stands.

### **San Giuseppe ai Teatini**

*Piazza Pretoria - via Vittorio Emanuele*

Tel. 091.331239. This splendid Baroque church is particularly striking for its original campanile, adorned with twisted columns, and its soaring dome covered with majolica tiles. The interior has a theatrical appearance thanks to the ceiling where white and gold stuccoes alternate with frescoes, and the rich decoration of the chapels.



### **I Quattro Canti (piazza Vigliena)**

Formed by the concave façades of four 17C buildings divided into three storeys, this elegant and harmonious square lies at the intersection of Corso Vittorio Emanuele



*Campanile della Cattedrale*



Cattedrale

and Via Maqueda. On the lower level are placed fountains surmounted by the statues of the four seasons, on the middle one are statues of the Spanish kings and, on the upper one, those of the patron saints of the four mandamenti (districts) lying behind each of them: St Christina, St Nympha, St Oliva and St Agatha, who was subsequently replaced by St Rosalia.



### Piazza Pretoria

This is bounded by the church of Santa Caterina and the Palazzo Senatorio; also known as the Palazzo Pretorio or delle Aquile, this is the town hall. In the centre is a spectacular fountain designed



The opening in April 1600 of Via Maqueda by the viceroy De Cardines, duke of Maqueda, made a fundamental change to the layout of Palermo, which had hitherto developed along the longitudinal axis of the Cassaro and its parallels. The crossroads formed by its opening is laden with symbolic meanings: four are the seasons and the elements and three (the storeys of the buildings) are the persons of the Trinity, while the sun, which constantly bathes at least one of the corners, makes the square a true "theatre of the sun".

in the 16C by two Florentine sculptors. This work is a riot of gods, nymphs, monsters, animals' heads, allegories, flights of steps, balustrades and water features that animate it without spoiling the balance of its composition.



Quattro Canti

The four reclining statues represent the rivers of Palermo: the Gabriele, the Mareddolce, the Papireto and the Oreto. Among the statues flanking the steps is Ceres, the patron goddess of Sicily, portrayed with ears of corn and a cornucopia.



### Piazza Bellini

One of the most delightful corners of the city, it epitomizes Palermo's history with its jumble of styles and special atmosphere.

Here are located the churches of Santa Caterina, the Martorana and San Cataldo, which, with its three pink domes, lends an oriental air to the place.



Fontana Pretoria

Ph. Ciro Grillo, arch. AAPIT Palermo



### La Martorana

Tel. 091.6161692. The church's true name is **Santa Maria dell'Ammiraglio** because it was built 1143 by George of Antioch, Roger II's admiral. Its more common designation refers to Eloisa Martorana, who in 1194 founded the Benedictine convent to which the church was given in 1433. The original Norman structure was notably changed in the 16C and 17C with the addition of the Baroque façade and alterations to the layout. The porch under the elegant 12C campanile gives access to the interior, which is clearly divided into two parts. The first two bays, added in the 16C, are decorated with 18C frescoes, while the original section of the church is all aglitter with splendid Byzantine mosaics. Services are conducted according to the Greek Orthodox rite.



La Martorana



The *frutta di martorana* or *pasta reale*, one of the most typical products of the Sicilian confectioners, originated here. Already in medieval times, for All Souls' Day, the nuns of the Benedictine convent of the Martorana prepared marzipan cakes shaped and coloured to resemble real fruit.



### San Cataldo

Tel. 091.6161692. Seat of the Order of the Knights of the Holy Sepulchre, this church dates from the 12C. The severe square form crowned with notched battlements, the openwork windows in the façade and the pink domes recall Arabic buildings. The bare, atmospheric interior preserves the original altar and floor.

The piazza is completed by the late -16C church of **Santa Caterina**, with an 18C interior richly



decorated with stuccoes and marmi mischi: note the curious marble relief on the right depicting the Shipwreck of Jonah.

### La Vucciria

The most famous food market in the city (its name derives from the French *boucherie*, “butcher’s”) developed as early as the 10C - 12C around Piazza Caracciolo and Via Argenteria. There is a particularly fascinating atmosphere at dusk when the large lamps on the stalls are turned on.



If you still have a little time left, be sure not to miss one of Serpotta’s marvellous oratories (see p. 29), visitable in the morning, and a walk in the Kalsa as far as Piazza Marina, the Palazzo Chiaramonte and Santa Maria della Catena (see p. 15-16).

Flanked by artisans’ workshops, restaurants, focaccia shops, bars and cafés, **Via Bara all’Olivella** and the parallel **Via dell’Orologio** lead to Piazza Verdi.

### Teatro Massimo

Tel. 091.6053515, toll free number 800.907080. An imposing Neoclassical edifice, it was started by Giovanni Battista Basile in 1875 and completed by his son Ernesto, who also designed the two little Art Nouveau kiosks giving onto Via Maqueda. The interior is elegantly decorated.



### Parco della Zisa

*Piazza Guglielmo il Buono*, tel 091.6520269. Bus 124 from the *Politeama*. What remains of *al-aziz*, ‘the magnificent’, is the fascination of the unadorned architecture created by the Arab builders for William I and William II from 1165 to 1180. In the 17C the Sandoval family converted La Zisa into an aristocratic palace, modifying its structure.

The heart of the building is the splendid *Sala della Fontana* on the ground floor; its equivalent on the top floor is the *Sala Belvedere*, which was originally open. Note the ingenious air-conditioning system: ducts cut into the walls of the side towers allowed the air



In the Arab and Norman periods large parks were located just outside Palermo: one of these, the **Genoard**, (lit. ‘earthly paradise’), to the west of the city, was chosen by the kings to build *sollatii*, pleasure palaces in the oriental sense of the term, places for relaxation surrounded by gardens containing exotic plants, fish-ponds, fountains and watercourses, as well as wild animals brought from distant lands. Thus were born La Zisa, La Cuba (see p. 26) the castle of the *Uscibene* (much altered, it is visible from *Viale Tasca Lanza*), the *Cuba Soprana* and the *Cubula* (incorporated in the *Villa Napoli*, see p. 26).

Teatro Massimo



to circulate, cooling the various rooms. The palace houses the **Museo di arte islamica**, with a collection of objects coming mainly from Egypt exemplifying the style that could have been found in the palace's original furnishings.

reigns supreme leaves the visitor spellbound. With more subdued colours than those in the Cappella Palatina – although the figures are more expressive – they were executed in the late 12C and early 13C by Venetian and Sicilian



The scenes are not lacking in realistic details: the ropes holding together the scaffolding of the Tower of Babel, the knives on the table of the *Marriage at Cana*, the coins rolling off the table overturned by Christ in the *Cleansing of the Temple* or the great variety of fish depicted in the Creation and the *Miraculous Draught of Fishes*. Note also the cloud indicating sleep (for example, the appearance of the angel to Joseph on the south side of the crossing) and the dark man representing the devil cast out from the bodies of the possessed or the wicked. Depicted as a little red man because of the blood spilled, Abel's soul is particularly curious.



### **Monreale Cathedral (Santa Maria la Nuova)**

Tel. 091.6404413 - 327.3510886  
Bus 389 from Piazza Indipendenza.  
For the description of the town see "The environs".

Built by William II in the 12C, the church is a wonderful combination of two styles: Arabic (decoration of the apses) and Norman (massive towers and structures). The porch is dominated by the splendid bronze door by Bonanno Pisano (1185), while the door on the north side, which is Byzantine in character, is by Barisano da Trani (12C).

Inside the church, the beautiful display of mosaics in which gold

craftsmen and depict scenes from the Old and New Testaments.

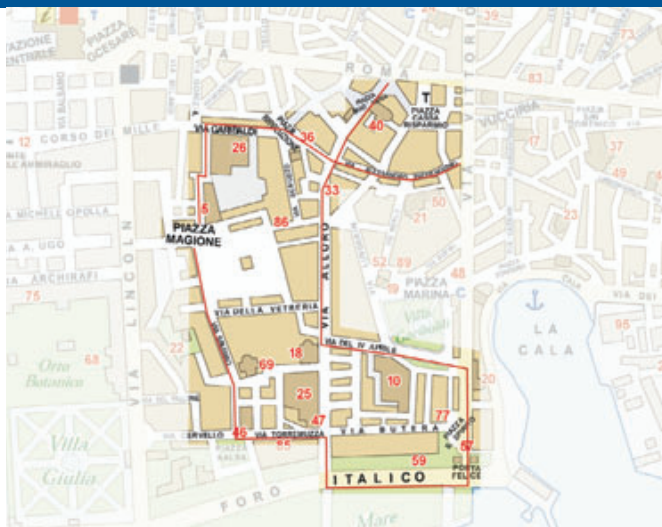
The cathedral houses the tombs of William I and William II, and, in an altar, the heart of St Louis, who died in Tunis in 1270 when his brother Charles I reigned in Sicily. Don't miss the climb up to the roof, where there's a magnificent view over the cloister and the Conca d'Oro.

### **Cloister**

Tel. 091.6404403. A masterpiece of stylistic synthesis of the western tradition and Islamic decoration, it offers views of the abbey complex. Particular remarkable are the capitals of the columns, for both their variety and the freedom of execution.



*Cloister of Monreale Cathedral*



## 2. The Kalsa

*Mandamento Tribunali. Tour starting from Via Roma.*

### **Piazza Sant'Anna,**

the heart of the ancient market of the Lattarini (see p. 34), is dominated by the splendid animated façade of the

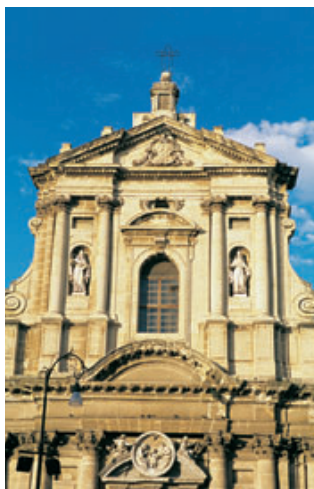


The name of the **mandamento Tribunali** derives from the Palazzo Chiaramonte, seat of the Inquisition and then the law courts. La Kalsa (al-khalisa, the pure) originated as a fortified citadel where the emir resided. In time the district grew up round the piazza of the same name and Via Alloro, where, from the 15C, the nobility built numerous houses. From the 18C large aristocratic palaces were erected on the seafront, their terraces facing the Passeggiata alla Marina (now Foro Italico). Razed to the ground by the air raids of 1943, the district paid a heavy toll in loss of lives and environmental damage. The rubble was thrown into the sea, distancing Foro Italico from the sea. Fascinating and contradictory, the area is now a vast building site thanks to renewal schemes that have permitted the rebirth of piazzas, palaces and other historic buildings, and the opening of internationally renowned cultural centres.

church of **Sant'Anna** (17C-18C), which is flanked by a former convent.

Nearby is the 18C **Palazzo Valguarnera-Gangi** (in Piazza Croce dei Vespri) with its lavish interiors where Visconti shot the ball scenes for his film *Il gattopardo* (*The Leopard*).

### *Chiesa di Santa Teresa alla Kalsa*



Via Aragona leads to the small **Piazza della Rivoluzione**, where the anti-Bourbon rebellion of 1848 started; in the centre is a fountain adorned with the 17C Genio di Palermo, a statue representing a king feeding a snake, a symbol of the city. A short way along Via Garibaldi is the Palazzo Ajutamicristo, a splendid late-15C building designed by Matteo Carnelivari; its courtyard contains an elegant two-storey loggia. Charles V stayed in the palace in 1537.

### Church of La Magione or the Santissima Trinità

*Piazza Magione 44, tel. 091.6170596 - 328.8039833.* Reached by a pleasant palm-lined path, the church was founded in the 12C by Matthew of Aiello, William I's grand chancellor. Severely damaged by the World War II bombs, it has been partially rebuilt. The interior is simple and bare. To the left of the church is the beautiful cloister of the former Cistercian monastery, where remains of pre-existing constructions are visible, including a 10C Arabic tower.

In front of the church, the vast **Piazza Magione** has been laid out with lawns.



### Santa Maria dello Spasimo

*Via dello Spasimo, tel. 091.6161486.* Built from 1506 onwards, the church and the adjacent convent were used as a fortress, theatre, lazaretto (hospital for the diseased, especially lepers), poorhouse and, until 1986, as a general hospital. After a period of dereliction, restoration has allowed the complex to be converted into a space for cultural events of various kinds (it now houses the European School of Jazz). The church is tall and slender, and the nave, which is roofless, ends in a splendid polygonal apse. From here there is access to the old Spanish ramparts (constructed next to the building as a defence against the Turkish threat in the 16C), which are now laid out as a garden. The complex is particularly attractive in the evening. Further along Via dello Spasimo,



Giacomo Basiliò, the patron of the church, commissioned Raphael to paint *Christ Falls on the Way to Calvary*, also known as *Lo Spasimo di Sicilia* (now in the Prado in Madrid). The name Santa Maria dello Spasimo derives from this work (spasimo = anguish).



*Chiesa di Santa Maria dello Spasimo*

on the left, is the complex of the former church of Santa Maria della Vittoria (15th-18C), which has a wooden door from the Arab citadel, and the adjacent **Oratorio dei Bianchi**, decorated with 18C frescoes.

The street leads to Piazza della Kalsa, which is overlooked by the monumental **Santa Teresa alla Kalsa**, built between 1686 and 1706 by Giacomo Amato. At the end of the street is the **Porta dei Greci**, erected between 1553 and 1581.



In Via Torremuzza there are a number of interesting buildings, especially the Noviziato dei Crociferi and the former church of San Mattia (17C), with their fine stone façades, and, on the opposite side, Santa Maria della Pietà, designed by Giacomo Amato (17C-18C).

After the crossroads with Via Alloro, it is possible to climb up to



the **Passeggiata delle**

**Cattive**, built in 1823 on the walls delimiting the *Passeggiata alla Marina*, a meeting-place for the city's fashionable nobility and a favourite venue for festivities and parades (a reminder of the glories of yesteryear is the Neoclassical bandstand). Here there are numerous aristocratic palaces with terraces commanding superb views over the sea. The raised promenade owes its curious name to the popular expression *mura di li cattivi*, "wall of the widows"

– "prisoners of mourning" (*cattivi* derives from the Latin *captivae*) – who enjoyed greater privacy here. Among the palaces flanking the promenade, the 18C **Palazzo Branciforti di Butera** was a true status symbol of the powerful Branciforti family. Steps lead down from the promenade to the monumental **Porta Felice** (1582), marking the eastern end of Corso Vittorio Emanuele.

Nearby, the remains of the 17C **Loggiato di San Bartolomeo**, part of an old hospital destroyed by the air raids, house exhibitions and other cultural events. On the opposite side is Piazza Santo Spirito with the **Fontana del Cavallo Marino** by Ignazio Marabitti (18C).



### **Santa Maria della Catena**

*Piazzetta delle Dogane*, tel. 091.321529. Its name derives from the catena (chain) closing the harbour that was fixed to the church's outer wall. A splendid example of the Catalan Gothic style (15th-16C), it is attributed to Matteo Carnelivari and is entered through a large porch concealing portals decorated by Vincenzo Gagini. On the other side of the Corso, San **Giovanni dei Napoletani** is a small 16C-17C building with stuccoes by Procopio Serpotta.



### **Piazza Marina**

One of the favourite haunts of Palermitans, this large piazza contains the pretty **Giardino Garibaldi** and is surrounded by fine palaces: Palazzo Galletti (no. 46, note the façade on Vicolo Palagonia), Palazzo Notarbartolo (no. 51)

*Chiesa di Santa Maria della Catena*





Palermo,  
il maestoso "figus"  
del giardino Garibaldi

Ph Pietro Lupo - Palermo 2008

and Palazzo Chiaramonte.  
On the opposite side of the piazza is  
the Fontana del Garraffo (late 17C).



### Palazzo Chiaramonte o Steri

Tel. 091.6075306. The façade of the  
severe and elegant palace, built in  
1307 by the Chiaramonte, one of the  
wealthiest and most powerful  
families in the kingdom, is adorned  
with two tiers of splendid three-light  
windows, a motif that was so  
successful that it gave rise to the  
Chiaramonte style, used in many  
civil buildings of this period. From  
the courtyard, embellished with a



In this district is the excellent  
Galleria Regionale della Sicilia in the  
Palazzo Abatellis (see p. 27). Not far  
from Piazza Kalsa, furthermore, are two  
delightful open spaces: Villa Giulia and  
the Botanical Garden (see p. 28).

loggia on the piano nobile, there is  
access to the Salone dei Baroni,  
with its superb painted wooden  
ceiling of the 14C.

The nearby Via IV Aprile skirts the  
Palazzo Palagonia, which houses  
the **Enoteca Sicilia**, a permanent  
show of the island's wines  
(Via IV Aprile 2, tel. 091.6162288).

### La Gancia (Santa Maria degli Angeli)

The church, built at the end of 15C  
by the Franciscans as a gancia  
(hospice), underwent numerous  
alterations that modified,



Work on the palace, also  
known as *Lo Steri* (from *Hosterium*,  
fortified palace), started in 1306 and it  
was progressively modified until 1392,  
when Andrea Chiaramonte, hostile to  
King Martin of Aragon, was beheaded  
in front of the building and his family's  
property confiscated. Passing into the  
hands of the Spanish viceroy, it was the  
seat of the Inquisition from 1601 until  
1782, when this institution was  
abolished in Sicily. It now houses the  
university rector's office.

above all, the interior, which is mainly  
Baroque in appearance, even  
though the single elements are from  
different periods. Amidst the  
surviving stuccoes by the *Serpotta*,  
note the delightful little child friar  
peering down from a cornice in the  
chapel to the left of the altar.

In **Via Alloro** note the remains of the  
splendid palaces that stood in what,  
together with Via Lungarini, was,  
in the 18C, the street where the  
aristocracy resided: nearby, the



In the outside wall of the  
church on Via Alloro it is possible to  
see the so-called **Buca della Salvezza**,  
an opening made by two rebels  
hiding in the crypt of the church during  
the uprising against the Bourbons in  
1860; thanks to the help of the local  
populace, they managed to escape  
through this hole.



Palazzo Mirto, fontana

Ph Pietro Lupo - Palermo 2008



**Palazzo Mirto** is one of the finest and best preserved (*Via Merlo 2*, see p. 27). Another interesting feature is the magnificent courtyard still visible amid the ruins of the bomb damaged **Palazzo Bonagia** (*Via Alloro 58*).

### **San Francesco d'Assisi**

*Piazza San Francesco*,  
tel. 091.582370 - 091.6162819  
Except for the rose window and the

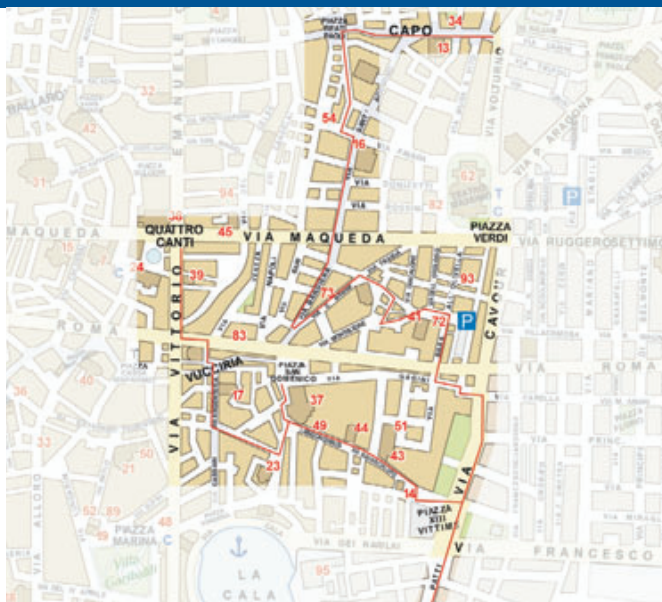
Gothic portal in the façade, little remains of the original 13C church, which was damaged and then restored on numerous occasions. Inside are statues by Giovanni Serpotta and the fine portal of the Cappella Mastrantonio (fourth on the left). Next to the church is the



**Oratorio di San Lorenzo**, with masterpieces by Giacomo Serpotta (see p. 29).



*Chiesa di San Francesco d'Assisi*



## 3. From the Cala to the Capo

*Castellammare and Monte di Pietà districts. Tour starting from Piazza Vigliena (Quattro Canti).*

### San Matteo

*Corso Vittorio Emanuele,*  
tel. 335.7490960 - 338.4512011.  
Built around the middle of the 17C,



The **mandamento Castellammare** (north-east of the Quattro Canti), transformed by the opening of Via Roma at the end of the 19C and badly damaged by the air raids of 1943, grew up round the harbour (the Cala) and its trading activities, in which communities of Amalfitans, Pisans, Luccans, Genoese and Catalans took part (they were the 'nations' that gave their names to many churches in this area). For centuries the Vucciria Market has been located in this district.

The **mandamento Monte di Pietà** or Capo (north-east of the Quattro Canti) was where the Muslims lived and the location of numerous artisanal and commercial activities, a characteristic it still has today with the bustling Capo Market.

it has a façade animated by alternating niches and projecting surfaces. It contains works by Pietro Novelli and Giacomo Serpotta, who is buried in the crypt.

At the intersection with Via Roma turn left. After the church of **Sant'Antonio Abate**, built in the 13C, but much altered (the campanile, built by the Chiaramonte, served to convene the city's assemblies), there is a descent to the Vucciria (see p. 11).

In Via Argentari, amid stalls and shops, stands the church of Sant'Eulalia dei Catalani, founded in the 15C.

Continue along this street to Piazza del Garraffello (the fountain dates from the late 16C), where the Palazzo Lo Mazzarino-Merlo is located; Giovan Pietro Mazzarino, father of Cardinal Jules Mazarin, future chief minister to the French king, was born here in 1576.

Turn into Via Materassai to reach Piazza San Giacomo La Marina,



where the 16C church of **Santa Maria La Nuova** stands. Built in Catalan Gothic style, it has a loggia recalling that of Santa Maria della Catena. The upper part, in neo-Gothic style, is a 19C addition. Take Via Meli to return towards Via Roma.

### San Domenico

*Piazza S. Domenico, tel. 091.589172 - 091.329588.* This majestic 17C-18C building is located in the attractive piazza of the same name. Divided into three storeys, the Baroque façade is adorned with stuccoes. The large interior is a pantheon where Sicilian artists, writers and politicians are buried. On the left is the 14C cloister belonging to the former Dominican convent now housing a small **Museo del Risorgimento** (*Piazza San Domenico 1, tel. 091.582774*).

Beyond the south side of the church is the beginning of Via Bambina. At no. 2 is the splendid



**Oratorio del Rosario di San Domenico** (see p. 29).

At the far end of the street is Largo Cavalier di Malta, surrounded by the vast Palazzo Pantelleria, Palazzo Requenses - Niscemi and the side



of **Santa Maria di Valverde**, entry to

which is through an elegant marble portal by Pietro Amato (1691). The interior is a riot of Baroque decoration with *marmi*

*mischi*, which, on the side altars, forms delicate draperies.

### Santa Cita (San Mamiliano)

Seriously damaged by air raids in 1943, it has a fine marble altarpiece by Antonello Gagini and the Cappella del Rosario, with polychrome marble inlays and delicate stuccoes.

In the crypt, the Cappella Lanza contains the remains of refined decoration with *marmi mischi*. Adjacent to the church is the



**Oratorio del Rosario di Santa Cita**, an unmissable

masterpiece by Giacomo Serpotta (see p. 29).

Via Squarcialupo leads to the church of **San Giorgio dei Genovesi**, a splendid example of Renaissance architecture. Now deconsecrated and used as an exhibition space, it was built by Genoese merchants, who were buried here (note the interesting tombstones). Near the church is a vast **archaeological area** with remains of medieval Palermo.

Beyond Via Crispi are the vestiges of **Castello a Mare**, a Norman fortress that was almost completely demolished in 1922 to make way for the extension of the harbour installations. The restoration work has allowed what remains of this old castle, built to defend the city, to be opened to the public.



Ph. *Ciro Grillo, arch. AAPIT Palermo*



In 1773 a storm obliged an English ship to put into the harbour of Marsala. On board was the merchant John Woodhouse, a connoisseur of Spanish and Portuguese fortified wines, who sent a sample of the local wine to England to test the market. There was a positive response and Woodhouse set up the first factory here. Soon another Englishman came to Marsala: this was Benjamin Ingham, who improved the quality of the wine by careful selection of the grapes. His firm then passed into the hands of his nephews, William and Joseph Whitaker. Joseph had 12 children and, on his death, his business was taken over by the three sons who stayed in Sicily: Joseph, who set up home in Villa Malfitano, in Via Dante (see p. 27), Joshua, who resided in Villa Whitaker in Via Cavour, and Robert, who lived in Villa Sofia (near La Favorita, now a hospital). With its cultural, artistic, philanthropic and social activity, the family left an indelible mark on Palermo in the belle époque.

To return to towards the city centre, take Via Cavour. At no. 6 the Prefecture is housed in the **Villa Whitaker**, built in 1884 by Joshua Whitaker in Venetian neo-Gothic style.

Now continue along Via Bara all'Olivella, where the imposing Palazzo Branciforte di Raccuja, built in the 16C, is located. In the nearby Via Lampedusa are the remains of the Palazzo Tomasi di Lampedusa, destroyed by wartime bombs. Via Bara all'Olivella leads into **Piazza dell'Olivella**, a pleasant little square surrounded by fine buildings.

### **Sant'Ignazio all'Olivella**

Tel. 091.586867.

This is a handsome church built in the 16C-17C on the site where, according to tradition, the house of St Rosalia's family stood. To the left of the church is the former monastery of the Fathers of the Oratory, which houses the



**Museo Archeologico Regionale** (see p. 27).

On the right, the **Oratorio di San Filippo Neri**, designed by Venanzio Marvuglia (1769), contains the stuccoes of a Glory by Ignazio Marabitti including a splendid angel surrounded by putti.

Nearby (*Via Monteleone 50*) is the **Oratorio di Santa Caterina d'Alessandria**, which has stucco decorations by Procopio Serpotta, Giacomo's son.

Now proceed to Via Patania to see the 17C Palazzo Sammartino with unusual sloping brackets supporting the balcony. Then turn left into Via San Basilio as far as the intersection with Via Bandiera.

There are two buildings of interest here: Palazzo Termine di Pietratagliata built in 1573 in Catalan Gothic style, with fine two-light windows divided by slender colonnettes supporting stone tracery, and the Palazzo Oneto di Sperlinga, an elegant noble residence of the 18C.

In Via Bandiera and Via Sant'Agostino (the crossing with Via Maqueda marks the beginning of the Monte di Pietà district) is the Capo Market, and this continues in Via Beati Paoli and Via Porta Carini (see p. 34).



### **Sant'Agostino**

This is an attractive 13C church built by the Chiaramonte and Sclafani families. The façade is adorned with a portal decorated with geometric and floral motifs and a splendid rose-window; the marble portal (15C) giving onto Via Sant'Agostino is also of interest. In the interior, with its Baroque alterations, there are stuccoes by Giacomo Serpotta, whose "signature" is visible (a lizard, sirpuzza in Sicilian) on the shelf under the second statue on the right.

### **Monte di Pietà**

Built in 1550 for the making of cloth (*panno*, the origin of the name of the adjacent Via Panneria), the edifice became the Monte dei Pegni (pawnbroker's) in 1591.

Now take Via Sedie Volanti ("Flying Chairs Street"), the name of which recalls the sedan chairs used in



Museo  
Archeologico  
Regionale  
"Antonino Salinas"

Chiesa di San Giorgio dei Genovesi



Ph Pietro Lupo, Palermo, 2007

the past in the narrow streets of the city centre. It leads to Piazza Beati Paoli, where the church of Santa Maria di Gesù al Capo is located. According to tradition, there was access from the church and the nearby Palazzo Baldi-Blandano to the underground cemetery used by the **Beati Paoli** sect for their meetings (see p. 31). Continue along Via Beati

Paoli to Via Cappuccinelle 6, where the refined Art Nouveau sign of the **Panificio Morello** is displayed.

In Via Porta Carini the **church of the Immacolata Concezione** (17C) conceals, behind its simple façade, a remarkably rich decorative scheme that includes marmi mischi (note the altar frontals) and a beautiful floor.



The nearby church of Maria Santissima della Mercede stands on a low hill at the heart of the mandamento Seracaldio (from the Arabic shari al-qadi, street of the judge), which embraced the whole of the present district. The part adjacent to the Porta Carini was called Caput Seracaldii (upper part of Seracaldio), from which the present name, "Capo", derives. The area where the market is held is lower than the surrounding streets because it occupies the old valley of the River Papireto.







## 4. From the Albergheria to the Piano della Cattedrale

*Mandamento Palazzo Reale. Tour starting from Piazza Vigliena (Quattro Canti).*

Via Maqueda leads to the church of San Nicolò da Tolentino (17C), which stands in the centre of what was the Jewish quarter of medieval Palermo.

On the opposite side of the street,

the 17C church of **Sant'Orsola** was the seat of the Compagnia dell'Orazione della Morte, which buried the dead in the district. In the last chapel on the right, decorated by Giacomo Serpotta, the usual riotous display of putti is replaced by dangling skeletons and bones.



The mandamento **Palazzo Reale** or **Albergheria** (south-west of the Quattro Canti) comprises the oldest nucleus of the city: here the Phoenicians were followed by Romans, Arabs and Normans, who concentrated the centres of their civil power in the western part. The eastern part was instead characterized by an irregular, densely populated urban area that grew up around Via Albergheria and Via del Bosco, and the presence of the Jewish quarter, which extended beyond present-day Via Maqueda. In the streets delimiting the Jewish quarter the street signs are in Italian, Hebrew and Arabic.

### **Palazzo Comitini**

*Via Maqueda 100, tel. 091.6628260.* Built at the end of the 18C for the prince of Gravina, the palace, which incorporates pre-existing buildings, was radically altered in 1931, when the offices of the province of Palermo moved here.

Inside the palace, the magnificent **Sala Martorana**, where the provincial council meets, is entirely lined with 18C boiserie and mirrors that enhance the splendid fresco on the ceiling.

On the opposite side of the street is the imposing **Palazzo Santa Croce - Sant'Elia**, one of the most refined creations of Palermitan Baroque, with beautifully frescoed



At the end of Via Maqueda, the 18C **Palazzo Filangeri di Cutò** is a long building in two parts that occupies two blocks.

interiors housing the Guggenheim Collection.

Lined by the fine, if rundown, noble palaces that gave prestige to the street, Via del Bosco leads to Piazza Ballarò, site of the long-established and very lively **Ballarò Market**, specializing in food products (see p. 34).

### **Church of the Carmine**

*Piazza del Carmine, tel. 091.6512018.*

Built in the 17C, it has a splendid dome: lavishly decorated and covered with majolica tiles, it is symbolically supported by four telamones. In the interior, the two sumptuous altars at the ends of the transepts, with gilded twisted

columns over which spirals of stuccoes are coiled, are by Giacomo and Giuseppe Serpotta.

Via Ballarò takes you into the heart of the market.

When you reach the piazza, a right turn will take you through the **Casa Professa Market**, specializing in second-hand goods.



### **Church of the Gesù**

*Tel. 091.327334.* This church, built by the Jesuits in the 16C and 17C, was badly damaged in 1943 and has been partially rebuilt. The sober façade contrasts with the Baroque exuberance of the interior, which is covered with stuccoes and *pietre dure*. The decoration of the presbytery is remarkable: the work of the Serpotta brothers, it is a riot of putti going about different tasks in a variety of poses. Next to the church is the vast **Casa Professa**, which became a library after 1767, when the



At a depth of 8 m, under the cloister of the 15C Palazzo Marchesi, (the Jesuits built the campanile of the Gesù on its tower) is one of the oldest **camere dello scirocco** in Palermo. These were artificial grottos in which the nobility took refuge when the scorching south-east wind called the scirocco swept over the city. The calcareous soil of Palermo is particularly suitable for this purpose and the presence of numerous springs allowed small pools to be formed in which to cool off.

Jesuits were expelled from the kingdom. On the first floor is the **Oratorio del Sabato**, decorated by Procopio Serpotta in 1740. Cross Rua Formaggi, the name of which has nothing to do with cheese, but refers to the Formaggi brothers, notaries who lived here. In Via Puglia note, on the left, the vast Palazzo Speciale, built in the 15C and altered on a number of occasions.



*Palazzo Comitini, sala Martorana*

*Ph Melo Minnella, arch. AAPIT Palermo, 1995*



Palazzo Asmundo

This leads to the piazzetta where the church of **Santa Chiara** stands: this is the 17C reconstruction of the church and convent built by the Sclafani in the 14C.

The interior contains beautiful and refined decoration.

In Via dei Biscottari ("Biscuit-Makers Street": there was a famous bakery here) observe the Palazzo Federico, an edifice of the 17C and 18C incorporating a tower built over the remains of an Arab gate.

### Palazzo Sclafani

This 14C edifice has two-light windows framed by the interlacing arches typical of the Arabo-Norman style and an elegant cusped portal surmounted by a golden eagle.

This is where the famous fresco of the *Triumph of Death* in the Galleria Regionale Siciliana came from.

### Palazzo Asmundo

Via Pietro Novelli 3, tel. 091.6519022. This is a fine building of the 17C-18C, with a remarkable view of the cathedral; it has excellent original decorations, including frescoes painted by Gioacchino Martorana.



In Vicolo Conte di Cagliostro stands the house where, in 1743, Giuseppe Balsamo, better known as Count Cagliostro, was born (see p. 31).

Cross Corso Vittorio Emanuele and turn into Via dell'Incoronazione.

The **Cappella di Santa Maria Incoronata**, built in the 12C, incorporates the remains of a 9C mosque. In the same street, the church of **Santa Maria di Monte Oliveto** (called "della Badia Nuova") is an elegant 17C building with a beautiful interior.

Nearby is **Sant'Agata alla Guilla**, an unadorned church of Norman origin rebuilt in the 15C and 16C. This area gets its name, Guilla, from the Arabic *wadi* ("valley", of the River Papireto), then altered to *guidda* and *guilla*.

Further down the street is the church of San Paolino dei Giardinieri (16C); destroyed by wartime bombs, it has been converted into a mosque.



## La Cuba

*Places of interest  
in alphabetical  
order reachable  
by car or public  
transport*

## More still...

### **Catacombs of the Capuchins**

*Piazza Cappuccini, tel. 091.6524156.  
Bus 327 from Piazza Indipendenza.*  
Not suitable for children or nervous people. About 8000 mummified remains of Capuchin friars and famous or wealthy Palermitans, women and children included, are displayed in a gloomy labyrinth of corridors. The writer Giuseppe Tomasi di Lampedusa is buried in the adjacent cemetery.

### **Church of San Giovanni dei Lebbrosi**

*Via S. Cappello 38, tel. 091.475024.*  
Bus from the central station. Perhaps the oldest Norman church in the city, it was founded in the 11C or 12C.

### **Church of Santo Spirito or dei Vespri**

*Via Santo Spirito, in the cemetery of Sant'Orsola, tel. 091.422691. Bus from the central station or the Vespri underground station.* Built in the 12C under Roger II, this church has an incomplete façade, but the sides and apses are embellished with bichrome interlacing arches, typical of Norman architecture. The interior is simple and atmospheric.

### **Complex of Santa Maria di Gesù**

*Via S. Maria di Gesù, tel. 091.445195. Bus from the central station.*  
Built in 1426 on the slopes of Monte Grifone, this is an oasis of peace that may be entered through the adjacent cemetery. The parvis of the church is surrounded by fine



On 31 March 1282, during vespers in the church of Santo Spirito, a French soldier insulted a Sicilian woman, provoking the reaction of the bystanders and offering a pretext for the growing discontent with the invaders to be expressed. This was the beginning of the War of the Vespers with which the French were expelled from the island.

tombs of aristocrats of the 19C and 20C, such as the chapel of the Lanza di Scalea designed by Ernesto Basile in 1900. On the north side of the church note the portal in Catalan Gothic style. On the south side is the cloister of the convent.



### **Cuba**

*C.so Calatafimi 100, tel. 091.520299. Bus 105 from Piazza Indipendenza.* Built in 1180 by William II, this is an edifice, notable for its simple yet beautiful decoration, that formed part of the complex of palaces located in the park of the Genoard (see p. 11). In the nearby Tuköry barracks it is possible to see the remains of a Punic cemetery.

### **Villa Napoli**

*C.so Calatafimi 577, tel. 328.3605846. Bus 105 from Piazza Indipendenza.* This 18C villa (used for exhibitions) incorporates the remains of the Cuba Soprana (12C). The magnificent gardens, now planted with citrus trees, contain La Cubula, one of the pavilions that were dotted over the Genoard.



# The museums

## Galleria d'Arte Moderna Empedocle Restivo

Via Sant'Anna 21, tel. 091.8431605.

This attractive Art Nouveau space houses a collection of 19C and 20C paintings and sculptures by artists from Sicily and elsewhere.

The gallery's collection of plaster casts is displayed in the Neoclassical

### Palazzo Ziino

(Via Dante 53, tel. 091.7407631).

## Galleria Regionale della Sicilia

Palazzo Abatellis, via Alloro 4, tel. 091.6230011. In a striking building in Catalan Gothic style, designed by Matteo Carnelivari towards the end of the 15C, the museum contains, above all, medieval paintings and sculptures. Not to be missed: the fresco of the *Triumph of Death* (15C), a bust of *Eleonora of Aragon* by Francesco Laurana (15C), *Virgin Annunciate* by Antonello da Messina (1473), the *Malvagna Triptych* by Mabuse (1510).

## Museo Archeologico Regionale

Piazza Olivella 24, tel. 091.6116805. Housed in the Olivella monastery, which was founded in the 17C by the Fathers of the Oratory, this museum contains a splendid collection of finds from Sicilian sites, in particular those from Selinunte. Not to be missed: metopes from Selinunte (575 BC), a bronze ram (3C BC), mosaics from Piazza della Vittoria in Palermo (3C AD).

## Museo Diocesano

Via Matteo Bonello 20, tel. 091.6077215 - 6077111. Open after renovation, the museum exhibits only part of its large collection.

## Museo Etnografico Pitré

Via Duca degli Abruzzi, 1 - Trasterito temporaneamente in via delle Pergole, 74 (via Maqueda), tel. 091.6177004. This museum has a large number of objects relating to local crafts and folklore.

## Museo della Fondazione Mormino

Via della Libertà 52, tel. 091.6085974.

Bus 101 from Via Maqueda.

On the first floor of the Villa Zito, it has Greek pottery, coins, majolica, a philatelic collection and engravings, mainly from Sicily.

## Museo Internazionale delle Marionette

Ptta A. Pasqualino, 5 tel. 091.328060.

This museum has a superb collection of Sicilian puppets, marionettes, shadow puppets, backdrops and panels from all over the world.

## Palazzo Mirto

Via Merlo 2, tel. 091.6167541.

In its present form, the palace dates from the late 18C. The public may visit the piano nobile, which still has its elegant original furnishings. Not to be missed: the Chinese and Pompadour rooms.

## Villa Malfitano

Via Dante 167, tel. 091.6816133 - 091.6820522. Bus 106 from Piazza

Castelnuovo. Surrounded by a beautiful garden, this Art Nouveau villa, built in the late 19C by Joseph Whitaker, is one of the masterpieces of the belle époque in Palermo, when it was a venue for important social events and was visited by the sovereigns of Britain and Italy.

The furnishings are remarkable. Not to be missed: Ettore de Maria Bergler's decoration of the Sala d'Estate.



Joseph Whitaker, who was passionately fond of ornithology and archaeology, travelled to Tunisia in order to study birds and started a series of excavations on the island of Mozia, which he had purchased. Another of his interests was botany: he had trees sent from all over the world and planted them in his garden. They included rare and exotic species: palms, the dragon's blood tree, the only specimen in Europe of the *Araucaria rulei* and a huge *Ficus magnolioides*.

# Curious and theme-based Palermo

Orto Botanico



## Villas and Gardens

### Giardino inglese

*Viale della Libertà.* A well-kept public garden, it has numerous palms, cacti, maritime pines and a *Ficus magnolioides*.



### Orto Botanico

*Via Lincoln 38, tel. 091.6238241 - toll free number 800.903631.*

Founded in 1789, the botanical garden has numerous exotic and oriental species, including a majestic *Ficus magnolioides*.

### Parco della Favorita

*Piazza Leoni.* La Favorita, which started life in 1799 as a hunting park for King Ferdinand IV of Bourbon, lies at the foot of Monte Pellegrino. It contains various sports facilities, the Città dei Ragazzi and the **Palazzina Cinese**, a building with exotic forms and décor designed by Venanzio Marvuglia at the end of the 18C. The adjacent building, once the servants' quarters, now houses the Museo Etnografico Pitré. The park also comprises the **Villa Niscemi** (Piazza Niscemi), a country house surrounded by an attractive garden.

### Villa Giulia

*Via Lincoln.* Laid out at the end of the 18C, this delightful garden contains a splendid fountain by Ignazio Marabitti (1780) sited in a space enclosed by four exedrae. Towards the Orto Botanico there is fountain, adorned with the *Genio di Palermo*, by the same sculptor.

### Villa Malfitano

*Via Dante 167, tel. 091.6816133 - 091.6820522, see p. 27.*



### Villa d'Orléans and its park

*Piazza Indipendenza.*

Built in 1797, the villa was Louis Philippe d'Orléans's home during his exile (1810-14).

Now the seat of the Sicilian regional government, it has a delightful park with a small zoo.

### Villa Trabia

*Via A. Salinas 3, tel. 091.7405905*

This is a splendid park (the largest in the urban area of Palermo) extending around an 18C villa. Now housing municipal offices, the villa is also a venue for cultural events.

# Serpotta's stuccoes



## Oratorio del Rosario di San Domenico

Via Bambinai 2, tel. 091.8431605.

The stuccoes frame a series of paintings representing the *Joyful* and *Sorrowful Mysteries*.

The allegorical representations of the Virtues are personified by remarkable female figures, notable for the elegance of their demeanour and the delicacy of the draperies clothing them.

Anthony Van Dyck's famous picture, the *Virgin of the Rosary* (1628), is located on the high altar.



**Giacomo Serpotta** (1652-1732), a member of a family of stuccoists, ennobled the technique of stuccowork with remarkable creations. Chapels and oratories in Palermo teem with his elegant figures, their vitality particularly evident in the putti, portrayed in the most fanciful poses. His son **Procopio** (1679-1755) was an excellent continuator of his work.



## Oratorio del Rosario di Santa Cita

Via Valverde 3, tel. 091.8431605.

This is a completely white hall in which angels, putti and allegorical figures exult in a wide variety of poses and expressions.

The entrance wall is covered with a stucco drape borne by a host of putti; in the centre is a relief depicting the *Battle of Lepanto*.



## Oratorio di San Lorenzo

Via dell'Immacolatella,

tel. 339.2376652. The masterpiece of Serpotta's mature period, it has been described as "a grotto of white coral". On the walls, stuccoes alternating with statues of the *Virtues* illustrate the lives of St Francis

and St Laurence. Caravaggio's *Nativity*, painted in 1609 for the oratory's altar, was stolen in 1969.



By **Giacomo Serpotta**: Oratorio dei Bianchi (see p. 14) with stuccoes from the monastery of the Stimmate, Oratorio di San Mercurio (Via dei Benedettini). By **Procopio Serpotta**: Oratorio di Santa Caterina d'Alessandria (see p. 20), Oratorio del Sabato (see p. 24), Oratorio del Carminello (Via Porta Sant' Agata), Oratorio dell'Immacolatella (Via Immacolatella), Oratorio di San Giuseppe dei Falegnami (Via d'Alessi, at the monastery of San Giuseppe dei Teatini).



Villa Igiea

## The modern city



### Sala Basile at the Villa Igiea

Salita Belmonte 43. Originally a nursing home for Igiea Florio, a tuberculosis sufferer, the villa was designed by Ernesto Basile, who converted a pre-existing neo-Gothic building into a comfortable dwelling, now a luxury hotel. The dining room, now the Sala Basile (ask the hotel staff for permission to visit it), was lined with *boiserie* and decorated by Ettore de Maria Bergler with beautiful evanescent female figures surrounded by delicate flowers.



### Villa Malfitano

Via Dante 167, tel. 091.6816133 - 091.6820522, see p. 27



### Villino Florio

Viale Regina Margherita 38. This charming house built by the Florio is one of the finest examples of Art Nouveau in Palermo: designed by Ernesto Basile in 1899, it was originally surrounded by a large park. The interior was destroyed by a fire in 1962.



Other buildings worth seeing, starting from Piazza Verdi:

- Ribaudo and Vicari kiosks, Piazza Verdi (1894-97, E. Basile)
- Ribaudo kiosks, Piazza Castelnuovo (1916, E. Basile)
- Teatro Politeama, Piazza Ruggero Settimo (1867-74, G. D. Almeyda)
- Cinema Nazionale, formerly Kursaal Biondo, Via Amari 168 (1913, E. Basile)
- Bandstand, Piazza Castelnuovo (1874, S. Valenti)
- Villino Favalaro, Piazza Virgilio (1889-1914, G. B. F. e E. Basile)
- Palazzo Dato, Via XX Settembre 36 (1903, V. Alagna)
- Palazzo Utveglio, Via XX Settembre 62 (1901, E. Basile)
- Villino Ida Basile, Via Siracusa 15 (1903-04, E. Basile)
- Palazzo Landolina di Torrebruna, Via Agrigento 5 (1901, G. Tamburello)
- Villa Chiamonte Bordonaro, Via delle Croci (1896, E. Basile)



Palchetto della Musica





# Tunnels and mysteries

## The Qanat

Dating back to the Norman period, the qanat of Palermo are artificial underground channels constructed to collect water and take it for a long distance down a gentle slope. A tour through them is an unforgettable experience: wearing overalls and a speleologist's helmet, visitors are accompanied by a Club Alpino Italiano guide. *For bookings contact: Palermo Sottosopra Cooperativa Solidarietà tel. 091.580433 - 091.6520067.*



*The qanats*

## In the footsteps of the Beati Paoli

According to legend, the terrible sect that from the 15C to the 18C secretly sought to avenge abuses and wrongdoing met in the tunnels forming part of a vast network of catacombs located, above all, in the Capo district. Basing himself on oral tradition (historical sources were practically non-existent), Luigi Natoli wrote a fascinating and very popular novel, published in instalments in 1909 and 1910 in the *Giornale di Sicilia*. The tour includes visits to the places mentioned in the novel. *For bookings contact: Cooperativa Cagliostro tel. 091.583218 - 091.334277.*

## Count Cagliostro

Giuseppe Balsamo was born in Palermo in 1743. Passionately fond of the occult sciences and the founder of a Masonic lodge, he styled himself Count Cagliostro and travelled round Europe practising the arts of the healer and magician with his miraculous "water of eternal youth". After various adventures he was imprisoned in the fortress of San Leo, near Urbino, where he died of privation and his body was taken to Palermo cemetery. His birthplace is near Piazza Ballarò, in Via Cagliostro. *For bookings contact: Cooperativa Cagliostro tel. 091.583218 - 091.334277.*

## Where to eat



### Palermitan fast food

In addition to the “court” cuisine (see p. 5), there is the popular fare that may be described as “Palermitan fast food” or “street food”; this is available from fried-food shops, baker’s and stalls serving tasty dishes that you can eat while strolling in the street. Here are the most common specialities:

**arancine di riso:** rice balls filled with meat sauce or ham and cheese

**babbaluci:** small marinated snails

**crocchè:** fried potato croquettes

**panelle:** pancakes of chick-pea flour served on their own or with bread

**caponata:** a mixture of fried vegetables in a sweet-and-sour sauce

**cardoni:** stalks of fried artichokes

**sarde a beccafico:** sardines stuffed with bread crumbs, raisins and pine nuts

**sfincione:** a kind of pizza topped with tomato, caciocavallo cheese, anchovies, onions and herbs

**panino con la milza:** the spleen (fried) may be *schietta* or *maritata* (“single” or “married”) – that is, served with just lemon or with ricotta and caciocavallo

### At the restaurant

The meal can start with various

**antipasti:** sardines in oil or a beccafico, vegetables in batter, caponata, sweet-and-sour pumpkin, aubergine rolls, insalata di musso (calf’s gristle), fishcakes of sardines or novellame (newborn fish, often served with pasta).



The **first course** will often be the main dish, especially if this is baked pasta, such as *pasticcio di anelletti*. First dishes usually followed by another course include pasta with sardines, anchovies or cuttlefish in their ink, *alla carrettera* (garlic, oil, red pepper and pecorino), with broccoli or *alla Norma* (tomato and aubergine). A soup worth trying is the *maccu di fave* (broad bean soup with fennel and tomato).

wide variety of flavours, some of them very original, such as scurzunera (jasmine) and mulberry.

## Wine

Sicilian wines are undergoing a true renaissance thanks to the commitment of the island's producers and a remarkable output of wine, which, after having been regarded as good only for blending due to its high alcohol content,



For the **second course** you can choose between *falsomagro* (meat stuffed with crumb of bread and various herbs), stewed cuttlefish, stuffed squid and sardines served in various ways.

## Sweets

One of the highlights of the Sicilian cuisine, they deserve special attention. The specialities include the famous **cassata**, sponge cake and ricotta covered with richly decorated icing, **cannoli** and *cannolicchi* (fried cones filled with ricotta), the *buccellato* (a doughnut of dried fruit, candied orange, honey and spices), *gelo di mellone* (watermelon jelly), *sfince di San Giuseppe* (fritters eaten on St Joseph's feast day) and, naturally, the superb *pasta reale* or *frutta di martorana* (a paste of almonds and sugar), used to make colourful marzipan fruit or forms linked to special events (for example, piglets for carnival).

Ice-creams are produced with a



is now expertly produced to obtain outstanding results with an excellent relationship between quality and price. Nero d'Avola is one of the great Italian red wines and, with its plum and morello cherry bouquet, is a pleasure to drink. Sicily's dessert wines, especially Marsala, Moscato di Pantelleria and Malvasia delle Lipari, have long been famous.



## The old markets



### **La Vuccirìa**

*Piazza Caracciolo and adjacent streets. Food market (see p. 11).*



### **Ballarò**

*Piazza del Carmine and Piazza Ballarò. This is the oldest food market in the city, crowded with Palermitans when they return from work, which explains the presence of cooked-food stalls (boiled vegetables, potatoes, *panelle*, ...).*



### **Casa Professa**

*Piazza di Casa Professa. Next to Ballarò, this specializes in second-hand goods and new and used clothing.*



### **Il Capo**

*The stalls devoted to food are located in *Via Carini* and *Via Beati Paoli*, while those selling clothing and shoes are in *Via Sant'Agostino* and *Via Bandiera*.*

### **Mercato delle Pulci**

*Piazza Peranni and Corso Amedeo. Bargaining is de rigueur in this flea market selling furniture, frames, toys and bric-a-brac.*

### **Lattarini**

*Piazza Sant'Anna and adjacent streets. The old *suk al-attarin* (spice market) now deals mainly in ironmongery, especially tools, clothing and cloth.*



La Città dei Ragazzi



## Palermo for children

### Small zoo at the Parco d'Orléans

Piazza Indipendenza, see p. 28.

### Museo Internazionale delle Marionette

Piazzetta A. Pasqualino 5  
(vicolo Niscemi, crossroad via Butera)  
tel. 091.328060, see p. 27.

### Museo del Giocattolo (Toy Museum)

Bagheria - Via Consolare 5, villa Cutò  
tel. 091.943801 - 335.6651025  
A collection of toys and dolls from the  
18C to the 20C.

### Città dei Ragazzi Children's play centre

Day care centre - Viale Duca degli  
Abruzzi 1 d (Parco della Favorita)  
tel. 091.6714373 - 091.7404998

### Puppet theatres

Argento, Via Pietro Novelli 1,  
tel. 091.6113680 - 333.2935028

Mimmo Cuticchio, Via Bara  
all'Olivella 95, tel. 091.323400

Teatro Ippogrifo, Vicolo Ragusi 6,  
tel. 091.329194 - 333.8979443

Teatro Arte Cuticchio, Via Benedettini  
n. 9, tel. 091.8146919 - 347.4547613

### Acquapark (Water park)

Monreale - contrada Fiumelato  
via Pezzingoli 172, tel. 091.6460246  
[www.acquaparkmonreale.it](http://www.acquaparkmonreale.it)



Museo delle Marionette

# Palermo's seaside resorts



Golfo di Mondello

Ph Massimo Lo Verde, arch. AAPIT Palermo, 1997

*A tour of 40 km along the coast from Palermo to Terrasini. Take Via Papa Sergio I and then Lungomare Cristoforo Colombo.*

The first place on this route is **Arenella**, which grew up in the 18C around a tunny-fishery that was converted by the Florio into a neo-Gothic villa in the mid-19C. After the Rotoli Cemetery is **Vergine Maria**, clustered around the picturesque **Tonnara Bordonaro** (16C).



Probably linked to an initiation ceremony or ritual, remarkable rock engravings have been found in the caves, which were already inhabited in the Palaeolithic. To see them, contact the Soprintendenza Archeologica di Palermo, tel. 091.6961319.

Then the coast gets more rugged and Monte Pellegrino more imposing. The road passes a 16C tower and, after Punta di Priola, the beach of the **Addaura**, situated in a natural amphitheatre formed by the mountain slopes, where numerous caves are to be found.



## Mondello

*Bus 806 from the Politeama.*

This elegant resort, which grew up on what was once a marshy area, was a favourite with well-to-do Palermitans from the beginning of the 20C onwards. This explains the presence of the attractive Art Nouveau villas on the seafront and in Viale Principe di Scalea, Via Margherita di Savoia (above all, in the first part) and the streets lying behind.

Kursaal - Mondello



Sant'Elia



Ph Ciro Grillo, arch. AAPIT Palermo



Along the main road (Via Tommaso Natale) leading back to Palermo it is still possible to see the more or less complete remains of the numerous **Baroque villas** constructed by the Palermitan nobility in the 17C and 18C in the **Piana dei Colli**, towards San Lorenzo. In their most widespread form, these villas had extensive gardens all'italiana and double access staircases.



*Faraglioni di Terrasini*

Ph. Ciro Grillo, arch. AAPIT Palermo

The seafront is dominated by the huge **Kursaal**, an early-20C bathing establishment. The oldest nucleus of the resort is a fishing village huddled around the tuna fishery, a tower of which still stands.

To the north of the bay is **Capo Gallo**, a headland with sheer rocky cliffs that can be reached by sea or along a private toll road from Mondello.

From Mondello, passing through Partanna, a road leads to **Tommaso Natale**, a village that grew up in the 18C around the villa of the marquis from whom it gets name.

Going away from Palermo, **Sferracavallo** is a picturesque village clustered round a harbour where small restaurants serve excellent seafood dishes.

**Isola delle Femmine** (the derivation of the name is uncertain and has nothing to do with women) is an island 300 m from the coast that still has the remains of a lookout tower; today it is a nature reserve created to protect the bird

communities found there. The village of the same name on the coast has a fine sandy beach.

After the Lido di **Capaci** and Punta Raisi (which, besides the airport, has an old tuna fishery with access to



the sea), the road continues to **Terrasini**, which overlooks the sea from the top of sheer cliffs of red rock, where there are small sandy inlets.



Seventeen km east of Palermo, the SS 113 main road comes to **Santa Flavia**, which is dominated by Monte Catalfano where Solunto is located (see below). Nearby is **Porticello**, a typical seaside village that boasts one of the largest fish markets in Sicily. **Sant'Elia** is another picturesque village, while Solanto (further south) is small village clustered around the remains of tuna fishery.

# The environs



## Monte Pellegrino

14 km to the north.

From Viale della Libertà turn right into Via Imperatore Federico and then continue along Via Bonanno.

Bus 812 from the Politeama.

The road, crossed repeatedly by a steep paved path (used by those making the ascent on foot) offers splendid views of Palermo and the Conca d'Oro.

On the way up the road passes the Castello Utveggio, a huge building also visible from the city.

At the top is the **Santuario di Santa Rosalia** (17C), a sanctuary built around the cave where, according to legend, St Rosalia lived.

Tel. 091.540326.



## Monreale

12 km south-west of Palermo,

taking Corso Calatafimi

(the continuation of Corso Vittorio Emanuele) and the

SS 186 main road to Monreale.

Bus from Piazza Indipendenza.

The town's historic centre extends along the slopes of Monte Reale (310 m), located in a splendid position overlooking the Conca d'Oro (the view from the belvedere behind the cathedral is superb).

The central Piazza Vittorio Emanuele is enclosed by the 18C town hall and the west side of the cathedral (for a description of this, see "Must-See Palermo").

Leading off the main square is a maze of little streets lined with numerous souvenir shops, cafés and restaurants.

Apart from its famous cathedral, Monreale has other places of interest such as the seminary (housed in the old Norman palace), the archbishop's palace, the church of the Monte, decorated with stuccoes by Serpotta, and the 17C collegiate church.

On the top of Monte Caputo, 3 km west of Monreale, are the ruins of the **Castellaccio**, a late-Norman castle that has a belvedere where there is a magnificent view.

On the road to Pioppo there is the beautiful wooded area of **Casaboli**; this comprises a wildlife reserve containing boar, fallow deer and Tibetan goats.

## San Martino delle Scale (Monreale)

10 km west of Monreale.

The road leading to it offers splendid views of Monreale and Palermo.

Located at a height of 548 m, the village is a popular holiday resort deriving its name from a Benedictine monastery that was founded in the 6C by St Gregory the Great and is built round a series of cloisters and colonnaded courtyards.

Ruins of Solunto



It is recounted that in 1624 the saint's bones were discovered here, after which they were carried in procession and this freed the city from the plague. Following this event, **St Rosalia** became the patron saint of Palermo. The cave is covered with zinc gutters used to collect the water – which is regarded as miraculous – oozing from the walls.

Further up is an observation point offering magnificent views over the sea.





*Duomo di Monreale*



### **Bagheria**

*16 km to the east.* This town is noted for its splendid **Baroque villas**, (there are over twenty) recalling the splendour and grandeur of the Palermitan aristocracy in the 17C and 18C. The most famous, **Villa Palagonia**, is embellished with the grotesque sculptures that horrified Goethe. *Tel. 091.932088.* **Villa Cattolica** houses the Galleria d'Arte Moderna e Contemporanea Renato Guttuso and Guttuso's tomb, designed by Giacomo Manzù. *Tel. 091.943902 - 091.943906.*



### **Ruins of Solunto**

*19 km to the east. Tel. 091.904557.* Located in a splendid position on the slopes of Monte Catalfano, a headland overlooking Capo Zafferano, Solunto was a Carthaginian city that came under Roman influence in the 3C BC. The archaeological site comprises the remains of the baths, agora, theatre, streets, houses, channels and numerous cisterns. Via Ippodamo da Mileto leads to the top of the hill from where there is a magnificent view of Palermo and Monte Pellegrino.

*Bagheria, villa Valguarnera*



# Practical information

## Public transport

This is operated by AMAT, *tel. 091.350111*. Besides tickets valid for one hour there are one-day tickets and blocks of 20 tickets.

The city centre is served by standard buses and three routes with electric buses at a lower fare:

**yellow route:** Kalsa, Ballarò and Policlinico; **red route:** central station to the Giardino Inglese along Via Roma and Via Maqueda; **green route:** Via Vittorio Emanuele.

City Sightseeing Palermo: the service carried out by open-top double-deckers, red coloured. Ticket valid 24 hrs for the two routes. Information: *via Emerico Amari n. 144 (kiosk), tel. 091.589429*.

There is also a service of underground trains, running about every 20 - 30 minutes, with the following stations in the city: Stazione Centrale, Vespri, Palazzo Reale - Orléans, Notarbartolo, Imperatore Federico - Stadio. Some of these trains also serve the Falcone-Borsellino Airport.

## Taxi

Autoradio Taxi - *tel. 091.512727*  
Radio Taxi Trinacria - *tel. 091.225455*  
Some taxi ranks in the city centre: Stazione Centrale, Politeama, Teatro Massimo, Piazza Indipendenza, Via Roma, Via Malta.

## Opening times

The «Regional Province of Palermo» issues publications with opening times of museums, churches and other buildings. There are various admission tickets, valid one or more days: Galleria di Palazzo Abatellis and Palazzo Mirto; Museo Archeologico Reg. and Palazzo Mirto; Galleria di Palazzo Abatellis, Museo Archeologico Reg. and Palazzo Mirto; Chiostro di Monreale, Cuba, Zisa and Chiostro di S. Giovanni degli Eremiti.

## Guided tours

Various organizations offer guided tours to Palermo's historic centre and Monreale and theme-based tours: the mandamenti, the Beati Paoli, the Qanat, Palermo and Cagliostro, Parco della Favorita, the catacombs, places associated with The Leopard (see below). For a complete list see the programme published by «Regional Province of Palermo».

## Where to stay

You see the Guide of the Hospitality or the official list of pag. 43.

## Quick meals

Here are some suggestions for a quick – but not exactly frugal – meal based on local specialities:

**Antica Focacceria San Francesco**, *via Ales. Paternostro 58 (church of San Francesco), tel. 091.320264*  
**Focacceria Basile**, *via Bara all'Olivella 76, tel. 091.335628*  
**Focacceria Basile 2**, *piazza Nascè 5 (Politeama), tel. 091.6110203*  
**Giannettino**, *piazza Ruggero Settimo n. 8/11, tel. 091.6114560*  
**I Cuochini**, *via Ruggero Settimo 68, tel. 091.581158*

## Cafés and Confectioner's

The outstanding quality of the confectionery shops in Palermo makes the choice difficult and, in a sense, superfluous. Here, however, are some suggestions:

**Antico Caffè**, *Via Principe di Belmonte 107*. One of the city's institutions: since 1860 it has served superb confectionery to be eaten at the open-air tables in the pedestrian area. Don't miss the marzipan fruit.  
**Bar Costa**, *Via V. Alfieri 13 (at the end of Via della Libertà), tel. 091.345652 - 091.341694*. Specializing in sweets, especially gelo di mellone and orange and lemon mousse.

**Capello**, *Via Colonna Rotta 68 (Zisa)*, tel. 091.489601. Its speciality is chocolate cakes, including the Setteveli and Volo (chocolate mousse and pistachio cream).

**Gelateria Ilardo**, *Foro Umberto I 12*. Long-established ice-cream parlour serving the pezzo di gelato made with traditional methods. The jasmine and cinnamon and cassata flavours are really special.

**Magri**, *Via Isidoro Carini 42*. Don't miss the dolci di riposto (this means they can be put in the pantry and kept) and the almond cakes.

**Mazzara**, *Via Gen. V. Magliocco 15 (Teatro Massimo)*, tel. 091.321443. This is the café where the author of *The Leopard*, Giuseppe Tomasi di Lampedusa, had his breakfast. Be sure to try the cassata, the cannoli and the ice-cream.

**Oscar**, *Via Migliaccio 39 (at the end of Via Notarbartolo)*, tel. 091.6822381. Cassata, Devil cake (the house speciality), marzipan and a thousand other delights. It's worth a trip from the historic centre!

**Scimone**, *Via Miceli 18 (on the corner of Via Imera)*, tel. 091.584448. Its delicious specialities include the sfince di San Giuseppe, dita degli apostoli and sweets with ricotta.

**Stancampiano**, *Via E. Notarbartolo n. 51*, tel. 091.6254099. Ice-cream parlour with an incredible range of flavours. Try the brioche with ice-cream and cream.

## Entertainment and cultural activities

Here is summary of the city's main cultural venues. For theatres see the programme published by the Regional Province of Palermo. For the puppet theatres see p. 35.

**Albergo delle Povere**, *Corso Calatafimi 217*.

Founded as a poorhouse at the end of the 18C and reserved for women in the 19C (a weaving factory was set up), it is now used for exhibitions and conferences.

**Cantieri culturali alla Zisa**, *Via Gili 4*, tel. 091.6524942. Close to the Zisa, the old workshops formerly belonging to Vittorio Ducrot (he made furniture for the architect Ernesto Basile) now house exhibitions, concerts and plays.

**Ex Magazzini Ferroviari ai Lolli**, *Piazza Lolli*. The passengers' building and warehouses of the former Lolli station (late 19C) host concerts and cultural events.

**Ex stazione Sant'Erasmo**, *Via Messina Marine*. Located at the mouth of the River Oreto, this late-18C building is an interesting exhibition space.

**Kursaal Kalhesa**, *Foro Umberto I 21*, tel. 091.6162111. The Palazzo Forcella (19C), which incorporates the 16C bastion of the Porta dei Greci, houses cultural spaces of various kinds, a bookshop, a restaurant and a wine bar with a summer terrace.

**Loggiato San Bartolomeo**, *Porta Felice*, tel. 091.6123832, see p. 15.

**Palazzo Ziino**, *Via Dante 53*, see also p. 27. The building houses exhibitions and a media library.

**Parco letterario Giuseppe Tomasi di Lampedusa**, *Vicolo della Neve all'Alloro 2/5*, tel. 091.6160796 - 349.8822453. The Palermo visitors' centre (other sections of the park devoted to the writer are in Palma di Montechiaro and Santa Margherita Belice) offers educational visits and "sentimental tours" to revive the atmosphere of *The Leopard*.

**Spasimo**, *Via dello Spasimo*, see also p. 14. This complex provides a fascinating venue for various cultural events, including concerts.

## Shopping

For information relating to the markets see p. 34. The city's smartest shops are concentrated in Via Roma and Via Maqueda and, above all, Viale della Libertà. The whole of the city centre is full of long-established crafts workshops and activities, as numerous street names attest – Via dell'Argenteria (Silverware Street), Via dei Calderai (Coppersmith's Street), Via dei Maccheronai (Macaroni-Maker's Street). Corso Vittorio Emanuele has pottery, puppets and Sicilian carts, Via Calderai specializes in the production of tin and copper objects (firedogs, kitchenware and tableware), Via Bara all'Olivella and the parallel Via dell'Orologio are noted for handicrafts shops (pottery, woodwork, puppets). Lastly, the coppersmiths of Ponte

Ammiraglio, the silversmiths of Piazza Meli and the fringe-makers of Via della Loggia deserve a mention.

Here are some suggestions for the purchase of traditional products.

**Bottega d'Arte** di Angela Tripi, *Corso Vitt. Emanuele 450*, tel. 091.6512787.

In the splendid Palazzo Santa Ninfa, a well-known workshop produces terracotta statuettes for cribs.

**Enoteca Picone**, *Via G. Marconi 36*, tel. 091.331300. Offers a wide range of wines – and there's plenty of expertise (and snacks) to help you with the tasting.

**Franco Bertolino**, *Salita Ramires 8*. One of the last craftsmen making models of the colourful traditional Sicilian carts, Bertolino has his workshop, shop and a small museum in an old building located close to the cathedral.

**Laboratorio Italiano**, *Via Principe di Villafranca 42*, tel. 091.320282.

A range of fine handcrafted pottery is displayed and on sale in the three rooms of this small workshop.

**I Peccatucci di Mamma Andrea**, *Via Principe di Scordia 67*, tel. 091.334835. With flair and good taste, Mamma Andrea prepares jam, sweets, liqueurs, honey and much more besides.

**Vincenzo Argento e Figli**, *Corso Vitt. Emanuele 445*, tel. 091.6113680. An incredible variety of puppets produced and sold since 1893.

## Calendar of events

### Spring

**Palermo Apre le Porte.**

*La scuola adotta un monumento (March-May)* – Palermo's schools pay tribute to the memory of judges Giovanni Falcone, Paolo Borsellino and the other victims of the Mafia by opening historic buildings not normally visitable.

**Festival of the SS. Crocifisso of Monreale** (*late April-early May*)

A festival honouring the Monreale crucifix with religious, cultural and popular events.

**Trofeo Florio – Rally Internazionale di Sicilia** (*May*) – Conceived by Vincenzo Florio in 1906, this car

race takes place on the fascinating circuit of the Madonie.

### Summer

There are numerous music and theatre festivals:

PalermoFest, Kals'art,

Festival di Verdura (the summer season of the Teatro Massimo at the Teatro di Verdura at Viale del Fante 70, in the Parco della Favorita), Palermo - Teatro del Sole Festival.

**World Festival On The Beach** (*May*)

A week of sport, music and other entertainments on the beach at Mondello.

**Giro Aereo Internazionale di Sicilia** (*July–September*) – This air tour of the island is over half a century old.

**Campionati Internazionali Tennis di Sicilia** – A tournament for men only that has been going since 1935.

**Festino di Santa Rosalia** (*9-15 July*).

The high point of the festival is a procession with the saint's statue on a huge cart along Corso Vittorio Emanuele. In the previous week, street musicians sing songs devoted to the saint and her hermitage in a cave on Monte Pellegrino. The festival ends with the traditional fireworks.

### October

**Coppa degli Assi**

A long-established international horse-riding competition with showjumping events.

**2 November (All-Souls' Day)**

Fiera dei Morti – On colourful stalls marzipan fruit, biscuits called ossa dei morti (bones of the dead), sugar dolls and toys are offered to the children on behalf of their deceased relatives.

**Late November – mid-December**

**Festival di Morgana**

Puppeteers and artists from all over the world meet at the Museo Internazionale delle Marionette.

**Christmas period**

**Kals'art Winter** – Winter version of the summer festival.



# Where to stay

Palermo Hotels and other accommodations (data to January 27th, 2010)

## Hotels, motels

### Grand Hotel Federico II \*\*\*\*

Via Principe Granatelli, 60 Tel. 091.7495052  
E-mail: info@grandhotelfedericoii.it

### Grand Hotel Wagner \*\*\*\*

Via Riccardo Wagner, 2 Tel. 091.336572  
E-mail: info@grandhotelwagner.it

### Villa Igiea Hilton Palermo \*\*\*\*

Salita Belmonte, 43 Tel. 091.6312111  
E-mail: acandilorlo@amthotels.it

### Ai Cavalieri Hotel \*\*\*\*

Via Sant'Oliva, 2 - 10 Tel. 091.583282  
E-mail: info@aicavalierihotel.it

### Artemisia \*\*\*\*

Via Roma, 497 - 499 Tel. 091.6090612  
E-mail: info@artemisiapalacehotel.it

### Astoria Palace Hotel \*\*\*\*

Via Montepellegrino, 62 Tel. 091.6281111  
E-mail: astoria@ghshotels.it

### Baglio Conca d'Oro \*\*\*\*

Località Borgo Molara - Via Aquino, 19 c - d  
Tel. 091.6406286 - 6408710  
E-mail: info@baglioconcadoro.it

### Centrale Palace Hotel \*\*\*\*

Corso Vittorio Emanuele, 327 Tel. 091.336666  
E-mail: centrale@angalahotels.it

### Excelsior Palace \*\*\*\*

Via Marchese Ugo, 3 Tel. 091.7909001  
E-mail: booking-excelsior@amthotels.it

### Grand Hotel et Des Palmes \*\*\*\*

Via Roma, 398 Tel. 091.6028111  
E-mail: lganci@amthotels.it

### Grand Hotel Piazza Borsa \*\*\*\*

Via dei Cartari, 18 Tel. 091.320075  
E-mail: piazzaborsa@piazzaborsa.com

### Grande Albergo Sole \*\*\*\*

Corso Vittorio Emanuele, 291 Tel. 091.6041111  
E-mail: sole@angalahotels.it

### Holiday Inn \*\*\*\*

Viale Regione Siciliana, 2620 Tel. 091.6983111  
E-mail: holidayinn.palermo@alliancealberghi.com

### Hotel Porta Felice \*\*\*\*

Via Butera, 35 - 47 Tel. 091.6175678  
E-mail: info@hotelportafelice.it

### Hotel Vecchio Borgo \*\*\*\*

Via Quintino Sella, 1 - 7 Tel. 091.6111446  
E-mail: hotelvecchioborgo@classicahotels.com

### Jolly Hotel del Foro Italico \*\*\*\*

Foro Umberto I, 22 b Tel. 091.6165090  
E-mail: palermo@jollyhotels.com

### Massimo Plaza Hotel \*\*\*\*

Via Maqueda, 437 Tel. 091.325657  
E-mail: booking@massimoplazahotel.com

### Mercure Palermo Centro \*\*\*\*

Via Stabile, 112 Tel. 091.324911 - 335.7592395  
E-mail: commerciale@mercurepa.com

### Mondello Palace \*\*\*\*

Mondello - Viale Princ. di Scalea Tel. 091.450001  
E-mail: mondellopalacehotel@libero.it

### Plaza Opèra Hotel \*\*\*\*

Via Nicolò Gallo, 2 Tel. 091.3819026  
E-mail: info@hotelpiazzaopera.com

### Politeama Palace Hotel \*\*\*\*

Piazza Ruggiero Settimo, 15 Tel. 091.322777  
E-mail: posta@hotelpoliteama.it

### President \*\*\*\*

Via Francesco Crispi, 230 Tel. 091.580733  
E-mail: president@shr.it

### Principe di Villafranca \*\*\*\*

Via Gius. Turrisi Colonna, 4 Tel. 091.6118523  
E-mail: info@principedivillafranca.it

### Quintocanto Hotel & SPA \*\*\*\*

Corso Vittorio Emanuele, 310 Tel. 091.584913  
E-mail: info@quintocantohotel.com

### Sanpaolo Palace Hotel \*\*\*\*

Via Messina Marine, 91 Tel. 091.6211112  
E-mail: booking@sanpaolopalace.it

### Splendid Hotel La Torre \*\*\*\*

Mondello - Via Piano di Gallo, 11 Tel. 091.450222  
E-mail: latorre@latorre.com

### Ucciardhome Hotel \*\*\*\*

Via Enrico Albanese, 34 - 36 Tel. 091.348426  
E-mail: info@hotellucciardhome.com

### Addaura Hotel Residence Congressi \*\*\*

Addaura - Lungomare Cristoforo Colombo, 4452  
Tel. 091.6842222 E-mail: hotel@addaura.it

### Ambasciatori \*\*\*

Via Roma, 111 (V piano) Tel. 091.6166881  
E-mail: segreteria@ambasciatorihotelpalermo.com

### Athenaeum \*\*\*

Via Luigi Giannettino, 4 Tel. 091.6523529  
E-mail: info@albergoathenaeum.it

### Bel 3 \*\*\*

Baida - Via Ruffo di Calabria, 20 Tel. 091.223560  
Tel. 091.6734571 E-mail: info@bel3.com

### Bellevue del Golfo \*\*\*

Sferracavallo - Via Plauto, 40 Tel. 091.530083  
Tel. 091.530618 E-mail: hotel.bellevue@email.it

### Casena dei Colli \*\*\*

Via Villa Rosato, 20 - 22 Tel. 091.6889771  
E-mail: info@casenadeicolli.it

### Conchiglia d'Oro \*\*\*

Località Mondello - Viale Cloe, 9 Tel. 091.450032  
E-mail: concoro@sicilia.com

### Cristal Palace Hotel \*\*\*

Via Roma, 477 a - d Tel. 091.6112580  
E-mail: rosario.russotti@shr.it

### Del Centro \*\*\*

Via Roma, 72 (II piano) Tel. 091.6170376  
Tel. 091.6168787 E-mail: info@hoteldelcentro.it

### Elite \*\*\*

Via Mar. Stabile, 136 Tel. 091.329318 - 336934  
E-mail: direzione@hoteliteelite.info

### Elite \*\*\* (dipendenza)

Via Mar. Stabile, 136 Tel. 091.329318 - 336934  
E-mail: info@hoteliteelite.info

### Hotel Amarcord \*\*\*

Via Mariano Stabile, 139 Tel. 091.6115144  
E-mail: info@amarcordhotel.it

**Hotel Europa \*\*\***

Via Agrigento, 3 Tel. 091.6256323  
E-mail: info@hotелеuropa.palermo.it

**Hotel Joli \*\*\***

Via Michele Amari, 11 Tel. 091.6111765  
Tel. 091.6111766 E-mail: info@hoteljoli.com

**Hotel Letizia \*\*\***

Via Bottai, 30 Tel. 091.589110  
E-mail: booking@hotelletizia.com

**Hotel Orleans \*\*\***

Via Monfenera, 106 Tel. 091.6688940 - 6570611  
E-mail: info@hotelorleans.it

**Hotel Posta \*\*\***

Via Antonio Gagini, 77 Tel. 091.587338  
E-mail: info@hotelpostapalermo.it

**Hotel Tonic \*\*\***

Via Mariano Stabile, 126 Tel. 091.6055308  
Tel. 091.581754 E-mail: info@hoteltonic.it

**Hotel Villa Esperia \*\*\***

Mondello Valdesi - Via Margherita di Savoia, 53  
Tel. 091.6840717 E-mail: info@hotellillaesperia.it

**Mediterraneo \*\*\***

Via Rosolino Pilo, 43 Tel. 091.581133  
E-mail: hmedpa@tin.it

**Ponte \*\*\***

Via Francesco Crispi, 99 Tel. 091.583744  
E-mail: mail@hotelponte.it

**Torreata Residence Hotel \*\*\***

Via del Bersagliere, 21 Tel. 091.540049  
E-mail: info@torreata.it

**Villa D'Amato \*\*\***

Via Messina Marine, 178 - 180 Tel. 091.6212767  
E-mail: info@hotellilladamatato.it

**Alessandra \*\***

Via Divisi, 99 Tel. 091.6173958 - 6174325  
E-mail: prenotazioni@hotel-alessandra.it

**Boston \*\***

Via Mar. Stabile, 136 Tel. 091.580234 - 6113532

**Columbia \*\***

Via del Celso, 31 Tel. 091.6113777 - 346.1874032  
E-mail: info@hotelcolumbiapalermo.com

**Cortese \*\***

Via Scarparelli, 16 Tel. 091.331722  
E-mail: htcortese@iol.it

**Florio \*\***

Via Principe di Belmonte, 33 Tel. 091.6090852  
E-mail: info@hotelflorio.com

**Gaia \*\***

Via Onorato, 13 Tel. 091.583011  
E-mail: palermohotelgaia@yahoo.it

**Gardenia \*\***

Via Stabile, 136 Tel. 091.322761 - 393.9222276  
E-mail: gardeniahotel@gardeniahotel.com

**Italia \*\***

Via Roma, 62 Tel. 091.6169320 - 338.9222547

**Libertà \*\***

Via Mariano Stabile, 136 Tel. 091.321911  
E-mail: info@libertahotel.com

**Madonia \*\***

Via Mar. Stabile, 136 Tel. 091.6113532 - 580234  
E-mail: posta@hotelmadonia.com

**Madonia \*\* (dipendenza)**

Via Mar. Stabile, 136 Tel. 091.6113532 - 580234  
E-mail: posta@hotelmadonia.com

**Moderno \*\***

Via Roma, 276 Tel. 091.588683 - 349.25677  
E-mail: info@hotelmodynopa.com

**Sausele \*\***

Via Vinc. Errante, 12 Tel. 091.6161308 - 6167524  
E-mail: info@hotelsausele.it

**Sicilia \*\***

Via Divisi, 99 Tel. 091.6168460  
E-mail: info@hotelsiciliapalermo.it

**Verdi \*\***

Via Maqueda, 417 Tel. 091.584928  
E-mail: info@albergoverdi.it

**Villa Archirafi \*\***

Via Abramo Lincoln, 30 Tel. 091.6168827  
E-mail: villaarchirafi@libero.it

**Alessandra \* (dipendenza)**

Via Divisi, 99 Tel. 091.6173958 - 6174325  
E-mail: prenotazioni@hotel-alessandra.it

**Attinasi \***

Via Roma, 97 Tel. 091.6175818

**Cavour \***

Via Alessandro Manzoni, 11 Tel. 091.6162759  
E-mail: albergocavour@virgilio.it

**Concordia \***

Via Roma, 72 Tel. 091.6230635  
E-mail: hotelconcordia@virgilio.info

**Corona \***

Via Roma, 118 Tel. 091.6162340  
E-mail: totobenigno@libero.it

**Cortese \* (dipendenza)**

Via Scarparelli, 16 (IV piano) Tel. 091.331722  
E-mail: htcortese@iol.it

**Elena \***

Piazza G. Cesare, 14 Tel. 091.6162021 - 6165331

**Gardenia \* (dipendenza)**

Via Stabile, 136 Tel. 091.322761 - 393.9222276  
E-mail: gardeniahotel@gardeniahotel.com

**Italia \* (dipendenza)**

Via Roma, 62 Tel. 091.6169320 - 338.9222547

**Orientale \***

Via Maqueda, 26 Tel. 091.6165727 - 6163506  
E-mail: prenotazioni@albergoorientale.191.it

**Orientale \* (dipendenza)**

Via Maqueda, 26 Tel. 091.6165727 - 6163506  
E-mail: prenotazioni@albergoorientale.191.it

**Paradiso \***

Via Schiavuzzo, 65 Tel. 091.6172825

**Rainbow \***

Piazzale Ungheria, 84 Tel. 091.582867  
Tel. 340.3081279 E-mail: info@hotelrainbow.it

**Regina \*\***

Corso Vittorio Emanuele, 316 Tel. 091.6114216  
E-mail: htregina@libero.it

**Vittoria \*\***

Via Maqueda, 8 Tel. 091.6162437 - 338.8899926  
E-mail: vittoria.albergo@libero.it

## Rooms to Let

**Al Baglio \*\*\***

Mondello - Via Gallo, 19 Tel. 091.6841275  
E-mail: mondelloalbaglio@libero.it

**Allakala \*\*\***

Corso Vittorio Emanuele, 71 Tel. 091.7434763  
E-mail: info@allakala.it

**Casa Riccio \*\*\***

Via G. Cusmano, 28 (X piano) Tel. 091.300768  
Tel. 333.9342245 E-mail: casariccio@aruba.it

**Cortile Palermo \*\*\***

Cortile Corrao, 2 Tel. 091.589084 - 340.3991402  
E-mail: cortilepalermo@virgilio.it

**Kala Marina \*\*\***

Via Bottai, 9 (palazzo Fatta) Tel. 091.5609520  
E-mail: info@lacambusa.it

**La Locanda del Gagini \*\*\***

Via Antonio Gagini, 111  
Tel. 091.333878 - 338.9431460  
E-mail: info@lalocandadelgagini.it

**Palazzo Pantaleo \*\*\***

Via Ruggiero Settimo, 74 h Tel. 091.325471  
Tel. 335.7006091 E-mail: info@palazzopantaleo.it

**Casa Orioles \*\***

Via alla Piazza dei Tedeschi, 4 Tel. 091.6526890  
Tel. 335.6310867 E-mail: contact@casarioles.it

**Palazzo Savona \*\***

Via degli Schioppettieri, 8 Tel. 091.6114731  
Tel. 339.4056220 E-mail: info@palazzosavona.com

**Seven Rooms \*\***

Via Montalbo, 241 Tel. 091.361696  
Tel. 328.2663945 E-mail: info@sevenrooms.it

## Tourist Residences

**La Marsa Vacances \*\*\*\***

Addaura - Lungomare Cristoforo Colombo, 4765  
Tel. 091.6841346 E-mail: info@lamarsa.it

**Residenza D'Aragona \*\*\***

Via Ottavio d'Aragona, 23-29 Tel. 091.6622222  
E-mail: info@residenzadaragona.it

**Addaura Hotel Residence Congressi \*\*\***

Addaura - Lungomare Cristoforo Colombo, 4452  
Tel. 091.6842222 E-mail: hotel@addaura.it

**Casena dei Colli \*\*\***

Via Villa Rosato, 20 Tel. 091.6889771 - 6889775  
E-mail: info@casenadeicolli.it

**Marbela \*\*\***

Via Salvatore Puglisi, 9 Tel. 091.6241111  
E-mail: info@marbelaresidence.it

**Mediterraneo \*\*\***

Via Rosolino Pilo, 55 Tel. 091.581133

**Residence Ambasciatori \*\*\***

Via Roma, 111 Tel. 091.6166881  
E-mail: booking@ambasciatorihotelpalermo.com

**Torreata Residence Hotel \*\*\***

Via del Bersagliere, 21 Tel. 091.540049  
E-mail: info@torreata.it

## Bed and breakfast

**A Casa di Amici 2 \*\*\***

Via Tunisi, 8 Tel. 091.584884 - 349.3212666  
E-mail: santo@acasadiamici.com

**A Casa di Giù \*\*\***

Via Simone Corleo, 7 Tel. 091.331038  
Tel. 335.8428892 E-mail: casadigiù@jjb.it

**Abali Gran Sultano \*\*\***

Via Sant'Agostino, 5 Tel. 338.3352997  
E-mail: sultano.abali@gmail.com

**Addauru \*\*\***

Vicolo San Gabriele, 4 Tel. 091.5073572  
E-mail: addaurupalermo@libero.it

**Agor'arte \*\*\***

Via Lincoln, 161 Tel. 091.6162093 - 327.4439653  
E-mail: info@bedandbreakfastpalermoagorarte.com

**Agramante \*\*\***

Via Terrasanta, 82 Tel. 091.9771505  
E-mail: bbagramante@tiscali.it

**Ai Bottai \*\*\***

Via Bottai, 30 Tel. 091.589110  
E-mail: booking@hotelletizia.com

**Al Tribunale \*\*\***

Corso Alberto Amedeo, 190 Tel. 091.7846660  
Tel. 320.2237563 E-mail: altribunale@gmail.com

**Alla Martorana \*\*\***

Via Roma, 171 Tel. 091.7842578 - 320.3574359  
Tel. 340.2443075 E-mail: info@allamartorana.it

**Amelie \*\*\***

Via Principe di Belmonte, 94 Tel. 091.335920  
E-mail: info@bb-amelie.it

**Art Lincoln \*\*\***

Via Lincoln, 161 Tel. 091.6177715 - 328.5445482  
E-mail: info@bedandbreakfastpalermoart.com

**Aurinn \*\*\***

Via Benedetto Gravina, 75 Tel. 333.9819127  
E-mail: info@aurinn.it

**B&B Florio \*\*\***

Via Giuseppe Mazzini, 49 Tel. 339.3773444  
Tel. 346.4743837 E-mail: info@bbflorio.it

**B&B Palikè \*\*\***

Via Emerico Amari, 140 Tel. 091.586795 - 546261  
E-mail: palikenc@libero.it

**B&B Politeama \*\*\***

Via Emerico Amari, 89 Tel. 338.3261264  
Tel. 328.9531335 E-mail: info@bbpoliteama.com

**BB 22 \*\*\***

Via Pantelleria, 22 Tel. 091.6111610  
Tel. 335.7908733 E-mail: info@bb22.it

**Capo Gallo \*\*\***

Mondello - Via Gallo, 38 p Tel. 349.3364404  
E-mail: info@bnbcapogallo.it

**Casa C'un Pari \*\*\***

Via E. Restivo, 95 Tel. 091.2523375 - 328.8438078  
E-mail: casacunpari@hotmail.com

**Casa e Putia \*\*\***

Via Belgio, 2 Tel. 091.517890 - 333.2261976  
Tel. 349.4654233 E-mail: casaeputia@gmail.com

**Casetta Manfredi \*\*\***

Via Spezio, 41 Tel. 091.2514948  
E-mail: info@casettamanfredi.com

**Coffee and the City \*\*\***

Via Mariano Stabile, 37 Tel. 334.9611681  
E-mail: info@coffeeandthecity.it

**Giardini \*\*\***

Via Maggiore Pietro Toselli, 26  
Tel. 091.9825886 - 347.9337805  
E-mail: mvalente44@yahoo.it

**Giugugìo \*\*\***

Via Bandiera, 77 Tel. 339.5705673 - 327.8235045  
E-mail: info@giugugio.it

**Gli Aristogatti \*\*\***

Via Bari, 18 Tel. 335.8114120 - 339.7032088  
E-mail: info@gliaristogatti.com

**I Cavalieri di Malta \*\*\***

Largo dei Cavalieri di Malta, 6  
Tel. 329.7954532 - 339.4866462  
E-mail: info@icavalieridimalta.it

**Il Conte Camillo \*\*\***

Via Camillo Cavour, 32 Tel. 091.6124377  
Tel. 338.6859677 E-mail: ilcontecamillo@alice.it

**Il Gallo \*\*\***

Mondello - Via Gallo, 38 Tel. 091.516178  
E-mail: info@ilgallobedandbreakfast.it

**Il Golfo \*\*\***

Sferracavallo - Via Dammuso, 88 Tel. 329.4243453  
Tel. 333.2791856 E-mail: martafavaloro@libero.it

**Il Mezzanino del Gattopardo \*\*\***

Via Alloro, 145 Tel. 091.6176120 - 333.4771703  
E-mail: ilmezz.gattopardo@tiscali.it

**In Villa \*\*\***

Mondello - Viale delle Sirene, 30 Tel. 091.450811  
Tel. 339.2116088 E-mail: invillabb@yahoo.it

**L'Olivella \*\*\***

Via Bara all'Olivella, 67 Tel. 091.6110288  
Tel. 347.6240062 E-mail: info@olivellabb.it

**La Casa di Zoè \*\*\***

Via Roma, 171 Tel. 393.4907236 - 392.5080969  
E-mail: lacasadizoe@hotmail.it

**Le Tartarughe \*\*\***

Via XX Settembre, 70 Tel. 091.6252338  
E-mail: mabalsano@libero.it

**Le Terrazze \*\*\***

Via P. Novelli, 14 Tel. 091.6520866 - 320.4328567  
E-mail: leterrazze\_palermo@yahoo.it

**Maride \*\*\***

Via Antonello da Messina, 15 Tel. 091.530655  
Tel. 328.7472656 E-mail: mario.cernigliaro@alice.it

**Maxim \*\*\***

Via Mariano Stabile, 136 Tel. 091.9765471  
E-mail: prenotazioni@bbmaxim.it

**Nobile Casa Roma \*\*\***

Via Roma, 97 Tel. 091.6176184  
E-mail: bbpalermo@email.it

**Nonna Angela \*\*\***

Via Carini, 25 Tel. 091.335042 - 347.7903942  
E-mail: marigt@inwind.it

**Notarbartolo \*\*\***

Via Emanuele Notarbartolo, 35  
Tel. 091.7308333 - 346.5365197  
E-mail: info@notarbartolo.com

**O' Scia \*\*\***

Via Giuseppe Garibaldi, 8 Tel. 091.6177950  
E-mail: info@bb-oscia.it

**Painted House \*\*\***

Via Arc. Leanti, 5 Tel. 091.5071049 - 347.3220124  
E-mail: giorgiascaduto@gmail.com

**Palazzo Amari - Bajardi \*\*\***

Via San Cristoforo, 15 Tel. 091.6162017  
E-mail: info@palazzoamaribajardi.it

**Palazzo Filangeri \*\*\***

Via Maqueda, 92 Tel. 091.6166766 - 340.6656247  
E-mail: luigimendola@palazzoilangeri.it

**Palermo Art \*\*\***

Via Camillo Cavour, 32  
Tel. 091.6110009 - 338.6704365 - 329.8726249  
E-mail: info@bbpalermoart.com

**Panormus \*\*\***

Via Roma, 72 Tel. 091.6175826 - 329.3539160  
E-mail: info@bbpanormus.com

**San Francesco \*\*\***

Via Merlo, 30 Tel. 091.8888391 - 8430810  
E-mail: info@sanfrancescopalermo.it

**San Gabriele \*\*\***

Via Alloro, 107 Tel. 091.2525476 - 339.7237060  
E-mail: info@bebsangabriele.it

**Sean \*\*\***

Mondello - Viale delle Viole, 18 Tel. 091.6842333  
Tel. 328.4196195 E-mail: seanbo@libero.it

**Sole Luna della Solidarietà \*\*\***

Via Vinc. Riolo, 7 Tel. 091.581671 - 338.7053861  
E-mail: info@solelunabedandbreakfast.org

**The Garden \*\*\***

Via Sterracavallo, 236 - 240 Tel. 091.530036  
Tel. 347.3594039 E-mail: info@bbthegarden.it

**Torrebruna \*\*\***

Via Agrigento, 5 Tel. 091.7300692  
E-mail: inzem@neomedia.it

**Villa Antonietta \*\*\***

Via Principe di Pantelleria, 12 Tel. 091.6884403  
Tel. 337.892973 E-mail: info@villantonietta.it

**Villa Artemide \*\*\***

Mondello - Via Apollo, 4 Tel. 091.451968  
Tel. 339.4928303 E-mail: villartemide@virgilio.it

**Villa Bella \*\*\***

Mondello - Via Margherita di Savoia, 91  
Tel. 091.6713230 - 393.5486538  
E-mail: giumor1950@libero.it

**Villa Partanna \*\*\***

Via Asilo Infantile Sella, 24 Tel. 091.6840509  
Tel. 091.451610 - 349.3745681 - 347.1890561

**A Casa di Amici \*\***

Via Volturmo, 6 Tel. 091.584884 - 328.3172205  
E-mail: info@acasadiamici.com

**Abaco \*\***

Via Divisi, 49 Tel. 091.7843227 - 338.5852671  
E-mail: aiovallasit@libero.it

**Agave \*\***

Via Cluverio, 14 Tel. 091.327817 - 328.6986715  
E-mail: agave@bedandbreakfastpalermo.com

**Ai Girasoli \*\***

Via Mariano Stabile, 200 Tel. 091.7846949  
Tel. 328.5544026 E-mail: info@aigirasoli.com

**Al Borgo Fiorito \*\***

Via Benedetto Gravina, 59 Tel. 091.6124625  
E-mail: alborgofioritobb@gmail.com

**Al Civico 10 \*\***

Via Ernesto Tricomi, 10 Tel. 346.4768212  
E-mail: alcivico10@hotmail.it

**Al Cortile \*\***

Sterracavallo - Cortile Rizzuto, 5 Tel. 091.534147  
Tel. 349.8066758 E-mail: info@alcortile.com

**Al Viandante \*\***

Via Dante Alighieri, 54 Tel. 338.5954576  
E-mail: info@alviandante.com

**Aleamar \*\***

Località Mondello - Viale Principe di Scalea, 52  
Tel. 091.6254349 - 451484 - 335.7638205

**Antonella \*\***

Via Orazio Antinori, 33  
Tel. 091.320125 - 329.7633533  
E-mail: infobox@antonellaoddo.com

**Atlante \*\***

Via L. Cadorna, 5 Tel. 091.214777 - 333.6273406  
Tel. 333.8748994 E-mail: bb.atlante@yahoo.it

**Az-Zahar \*\***

Via del Bersagliere, 30 Tel. 347.6351855  
Tel. 329.0424748 E-mail: info@az-zahar.it

**Casacquerello \*\***

Mondello - Viale Orfeo, 9 - 11 Tel. 091.451763  
Tel. 328.7323324 E-mail: info@casacquerello.it

**D'Angelo \*\***

Via Roma, 83 Tel. 091.7847302 - 340.7697922  
E-mail: info@bedbreakfastdangelo.com

**Della Lungarini \*\***

Via T.R. 1 (trav. via Lungarini, 8) n. 7  
Tel. 091.7573085 E-mail: info@dellalungarini.it

**Giorgio's House \*\***

Via Antonio Mongitore, 11 b Tel. 091.525057  
Tel. 347.2214823 E-mail: sugi@libero.it

**Il Banano \*\***

Mondello - Via Stesticoro, 3 Tel. 091.455926  
Tel. 328.4108554 E-mail: info@ilbanano.com

**Il Principe \*\***

Via Principe di Scordia, 126 Tel. 091.7841010  
Tel. 340.1044143 E-mail: info@bebilprincipe.com



**Isola Sonora \*\***

Via Benedetto Gravina, 59 Tel. 091.6124267  
Tel. 347.3351317 E-mail: isolasonora@libero.it

**Kemonia \*\***

Via Nicolò Turrisi, 38 b Tel. 348.3715867  
Tel. 329.1757509 E-mail: info@kemonia.com

**L'Attico \*\***

Via Antonio Ugo, 86 Tel. 338.8907227  
Tel. 338.6339850 E-mail: attico.bb@gmail.com

**Miramar \*\***

Piazza Acquasanta, 12 Tel. 091.549338  
Tel. 340.5502032 E-mail: helgaomodei@libero.it

**Morfeo \*\***

Via Emerico Amari, 38 Tel. 328.8944982  
E-mail: chiaracannova@libero.it

**Nimia \*\***

Via Maqueda, 7 Tel. 091.8437223 - 347.8877794  
E-mail: info@bbnimia.it

**Nova Cappuccini \*\***

Corso Calatafimi, 89 Tel. 347.0583269  
E-mail: info@novacappuccini.it

**Piccola Sicilia \*\***

Via Tenente Giovanni Ingrao, 2 Tel. 091.320335  
Tel. 349.0508658 E-mail: info@piccolasicilia.it

**Politeama Square \*\***

Via Emerico Amari, 112  
Tel. 091.7495314 - 338.6584944  
E-mail: info@politeamasquare.com

**Real Teatro Santa Cecilia \*\***

Via Pic. Teatro Santa Cecilia, 5 Tel. 338.4557511  
E-mail: bbteatroscecilia@alice.it

**Rosella \*\***

Via Roma, 72 Tel. 091.6171098  
E-mail: info@rosellabianchibb.com

**Vicho \*\***

Via Roma, 118 Tel. 091.6160709 - 392.9394126  
Tel. 392.9206185 E-mail: vichobed@alice.it

**Villa Addaura \*\***

Addaura - Lungomare Cristoforo Colombo, 1931  
Tel. 091.6849031 E-mail: info@villa-addaura.com

**Villa Maurigi \*\***

Via Agnetta, 91 Tel. 091.331101 - 333.6378050  
E-mail: a.ticli@tiscali.it

**Zia Caterina \*\***

Via Gorizia, 8 Tel. 091.9823793 - 329.4159236  
E-mail: caterina.cannici@fastwebnet.it

**Aimone \***

Via Ammiraglio Gravina, 57 Tel. 329.5619098  
E-mail: loris.dilorenzo@libero.it

**Al Politeama \***

Piazza Sant'Oliiva, 37 (IV piano) Tel. 091.586550  
Tel. 328.7591781 E-mail: ptopon@alice.it

**Al Vicoletto \***

Cortile Vanellone, 4 Tel. 338.6812650  
Tel. 333.1255214 E-mail: vicoletto\_2007@libero.it

**Alla Vucciria \***

Via dei Coltellieri, 46  
Tel. 091.6196296 - 348.2650787  
E-mail: cutronaconsulting@tin.it

**Alla Zisa \***

Via Francesco Domenico Guerrazzi, 23  
Tel. 091.7848425 - 337.891388

**Arte Palermo \***

Vicolo Madonna del Cassaro, 7 Tel. 091.325780  
E-mail: marjolein\_wortmann@hotmail.com

**La Fuitina \***

Via Garraffello, 6 Tel. 091.9766501 - 347.1541696  
E-mail: info@fuitina.com

**La Terrazza \***

Mondello - Via Saffo, 9 Tel. 091.6161783  
Tel. 339.3352365 E-mail: curangela@lycospower.it

**Mediterraneo \***

Via Tenente Giovanni Ingrao, 2 Tel. 091.7574886  
Tel. 335.7760377 E-mail: info@bedmediterraneo.it

**Teatro Massimo \***

Via Orologio, 31 Tel. 091.6197653 - 338.8323334  
E-mail: 3388323334@tim.it

## Summer Vacation Houses

**Centro Franc. di Spiritualità S. G. Battista \***

Località Baida - Via al Convento di Baida, 43  
Tel. 091.223595 - 333.8454698  
E-mail: cfsbaida@ofmsicilia.it

**Family House Palermo Onlus \***

Via Manzoni, 11 Tel. 091.6162169 - 330.967062  
E-mail: familyhousepalermo@libero.it

**Figlie di Sant'Anna \***

Via d'Ossuna, 110 Tel. 091.6516678 - 6512700

**Foresteria Valdese \***

Via Evangelista Di Blasi, 12  
Tel. 091.6817941 - 6817943  
E-mail: c.d.foresteria@lanoce.org

## Holiday Houses and Flats

**Alla Marina di Villa Igiea \***

Acquasanta - Cortile Trapani, 7 Tel. 091.6851557  
E-mail: postmaster@bagliodicalabruca.it

**Arckirafi \***

Via Lincoln, 26 Tel. 091.6177148 - 091.6168827  
E-mail: villaarchirafi@libero.it

**Casa Orioles \***

Via alla Piazza dei Tedeschi, 4 Tel. 091.6526890  
Tel. 335.6310867 E-mail: contact@casarioles.it

**Hollyday Home 151 \***

Via Montepellegrino, 151  
Tel. 091.6376195 - 338.3747301

**Orsa \***

Via Agrigento, 3 - 5 Tel. 091.6256323  
E-mail: info@hoteleuropa.palermo.it

**Porta Carini \***

Via Porta Carini, 46 Tel. 091.328840  
E-mail: portacarinivacanze@libero.it

**Villa Tasca \* (dimora storica)**

Viale Regione Siciliana, 399 (Sud-Est)  
Tel. 091.6574305

## Youth Hostels

**Baia del Corallo \***

Sferracavallo - Via Plauto, 27 Tel. 091.6797807  
E-mail: palermo@aighostels.com

**Casa Marconi \***

Via Monfenera, 140 Tel. 091.6570611  
E-mail: info@casamarconi.it

**Hotel Firenze \***

Via dei Candelai, 68 Tel. 091.7847645  
E-mail: bookinghotelfirenze@gmail.com

## Camping Sites

**Trinacria \*\***

Località Sferracavallo - Via Barcarello, 23  
Tel. 091.530590

**Campeggio degli Ulivi \***

Località Sferracavallo - Via Pegaso, 25  
Tel. 091.533021 - 6727230

# Index

- Acquapark (Water park); 35  
Addaura; 36  
Albergheria; 23  
Arenella; 36  
Badia Nuova; 25  
Bagheria; 39  
Beati Paoli; 31  
Cagliostro, Count of; 31  
Cala; 18  
Camere dello scirocco; 24  
Capo; 18; 21  
Capo Gallo; 37  
Cappella di Santa Maria Inconronata; 25  
Cappella Palatina; 7  
Càssaro; 7  
Castello a Mare; 19  
Catacombe dei Cappuccini; 26  
Cattedrale; 8  
Chiesa dei Vespri; 26  
Chiesa del Carmine; 24  
Chiesa del Gesù; 24  
Chiesa del SS. Salvatore; 8  
Chiesa dell'Immacolata Concezione; 21  
Città dei Ragazzi; 35  
Cuba; 26  
Enoteca Sicilia; 16  
Family Whitaker; 20; 27  
Festino di Santa Rosalia; 42  
Fountain, Piazza Pretoria; 9  
Galleria d'Arte Moderna; 27  
Galleria Regionale di Sicilia; 27  
Gancia; 16  
Genoard; 11  
Giardino Garibaldi; 15; 16  
Giardino inglese; 28  
Isola delle Femmine; 37  
Kalsa; 13  
Loggiato di S. Bartolomeo; 15  
Magione; 14  
Mandamenti; 2  
Mandamento Castellammare; 18  
Mandamento Monte Pietà; 18  
Mandamento Palaz. Reale; 23  
Mandamento Tribunali; 13  
Martorana; 10  
Mercato dei Lattarini; 34  
Mercato del Capo; 34  
Mercato della Vucciria; 11  
Mercato delle Pulci; 34  
Mercato di Ballarò; 34  
Mercato di Casa Professa; 34  
Mondello; 36  
Monreale; 12; 38  
Monte di Pietà; 20  
Monte Pellegrino; 38  
Museo Archeologico Reg.; 27  
Museo del Giocattolo; 35  
Museo del Risorgimento; 19  
Museo della Fondazione Mormino; 27  
Museo Diocesano; 27  
Museo Etnografico Pitré; 27  
Museo Internazionale delle Marionette "Pasqualino"; 27  
Oratorio dei Bianchi; 14  
Oratorio del Rosario di S. Cita; 29  
Oratorio del Rosario di S. Domenico; 29  
Oratorio del Sabato; 24  
Oratorio di Santa Caterina d'Alessandria; 20  
Oratorio di S. Filippo Neri; 20  
Oratorio di S. Lorenzo; 29  
Orto Botanico; 28  
Palazzina Cinese; 28  
Palazzo Ajutamicristo; 14  
Palazzo Asmundo; 25  
Palazzo Bonagia; 17  
Palazzo Chiaramonte; 16  
Palazzo Comitini; 23  
Palazzo dei Normanni; 6  
Palazzo Mirto; 27  
Palazzo Reale; 6  
Palazzo S. Croce - S.Elia; 23  
Palazzo Sclafani; 25  
Palazzo Steri; 16  
Palazzo Ziino; 27  
Panificio Morello; 21  
Parco della Favorita; 28  
Passeggiata delle Cattive; 15  
Piana dei Colli; 37  
Piazza Bellini; 10  
Piazza Bologni; 8  
Piazza della Rivoluzione; 14  
Piazza Magione; 14  
Piazza Marina; 16  
Piazza Pretoria; 9  
Piazza Vigliena; 9  
Porta dei Greci; 15  
Porta Felice; 15  
Porta Nuova; 7  
Porticello; 37  
Qanat; 31  
Quattro Canti; 9  
S. Agata alla Guilla; 25  
S. Agostino; 20  
S. Antonio Abate; 18  
S. Cataldo; 10  
S. Caterina; 11  
S. Chiara; 25  
S. Cita; 19  
S. Domenico; 19  
S. Francesco d'Assisi; 17  
S. Giorgio dei Genovesi; 20  
S. Giovanni degli Eremiti; 7  
S. Giovanni dei Lebbrosi; 26  
S. Giovanni dei Napoletani; 15  
S. Giuseppe ai Teatini; 8  
S. Ignazio all'Olivella; 20  
S. Mamiliano; 19  
S. Maria degli Angeli; 16  
S. Maria dell'Ammiraglio; 10  
S. Maria della Catena; 15  
S. Maria dello Spasimo; 14  
S. Maria di Gesù; 26  
S. Maria di Monte Oliveto; 25  
S. Maria di Valverde; 19  
S. Matteo; 18  
S. Orsola; 23  
S. Spirito; 26  
S. Teresa alla Kalsa; 15  
San Martino delle Scale; 38  
Santa Flavia; 37  
Santuario di Santa Rosalia; 38  
Sferracavallo; 37  
Solunto; 39  
Spasimo; 14  
Teatro dei pupi; 35  
Teatro Massimo; 11  
Terrasini; 37  
Tommaso Natale; 37  
Vergine Maria; 36  
Via Alloro; 17  
Via Bara all'Olivella; 11  
Via Torremuzza; 15  
Villa Bonanno; 8  
Villa d'Orléans; 28  
Villa Giulia; 28  
Villa Igiea; 30  
Villa Malfitano; 27  
Villa Napoli; 26  
Villa Niscemi; 28  
Villa Trabia; 28  
Villa Whitaker; 27  
Villino Florio; 30  
Vucciria; 11  
Whitaker family; 20; 27  
Zisa; 11

# Sicily



## The Regional Province of Palermo

Tourism Department

90133 Palermo - via Roma, 19, former Railway Building tel. 09.6628111 - 6628114  
fax 091.582788 e-mail: [turismo@provincia.palermo.it](mailto:turismo@provincia.palermo.it) web: [www.provincia.palermo.it](http://www.provincia.palermo.it)

Press office

tel. 091.6628936 fax 091.6628935 e-mail: [stampa@provincia.palermo.it](mailto:stampa@provincia.palermo.it)

Public relations office

tel. 091.6628419 - 6628923 - 6628450 fax 091.6628419 e-mail: [urp@provincia.palermo.it](mailto:urp@provincia.palermo.it)

*Giovanni Avanti, President of the Province*

*Marianna Mirto, Head of Cabinet Office*

*Filippo Spallina, Tourism Department Director*

*Angelo Scuderi, Press Office Manager*

*Alfonso Lo Sardo, Press Secretary to the President*

*Giacomo Campanella, Communications Consultant*

Editorial director: Maura Marca - Michelin Italiana s.p.a. Edizioni per Viaggiare

Translation: David Stanton

Book design: De Giorgi Advertising, Turin

Cartography: Studio grafico Pietro Lupo - [www.quicksicily.com](http://www.quicksicily.com) - Palermo

Photographs: Francesco Alaimo, Ciro Grillo, Giusi Ingrassia, Massimo Lo Verde, Pietro Lupo,  
Melo Minnella, Fabio Savagnone and photographic archive AAPIT Palermo

Printed by: Officine Grafiche Riunite s.p.a. - [www.officinegrafiche.it](http://www.officinegrafiche.it), Palermo, gennaio 2010

All rights reserved © 2005 Michelin Italiana s.p.a. Edizioni per Viaggiare

Special initiatives: Philippe Orain, Kenol Verdoia

*We apologize for any imprecise information contained in this brochure.  
Dates and hours sometimes vary without notice. For any information regarding updates  
or changes please contact "Provincia Regionale di Palermo Tourist Information Office"  
Piazza Castelnuovo 34, 90141 Palermo", e-mail: [info@palermotourism.com](mailto:info@palermotourism.com).*



**Regional  
Province  
of Palermo**



---

Palermo: A necessary part of the Grand Tour undertaken in the 18C and 19C by writers, poets and artists, attracted by the city's oriental atmosphere and its eclectic and varied sights, Palermo has managed to preserve the fascination of the peoples who lived here: Phoenicians, Romans, Byzantines, Arabs, Normans, Swabians, Angevins and Spaniards all left their imprint on the city's art and life.

---



**The Regional Province of Palermo**  
Tourism Department

**REGIONAL PROVINCE OF PALERMO**  
**TOURIST INFORMATION OFFICES**

**PALERMO**

90141 Palermo - piazza Castelnuovo, 34 tel. 091.6058351  
fax 091.586338 e-mail: info@palermtourism.com

**FALCONE BORSELLINO AIRPORT**

90045 Cinisi - tel. 091.591698 fax 091.6525053

**VISITOR CENTER PALAZZO COMITINI**

90134 Palermo - via Maqueda, 100 tel. 091.6628260  
fax 091.6628260 e-mail: accoglienza@provincia.palermo.it



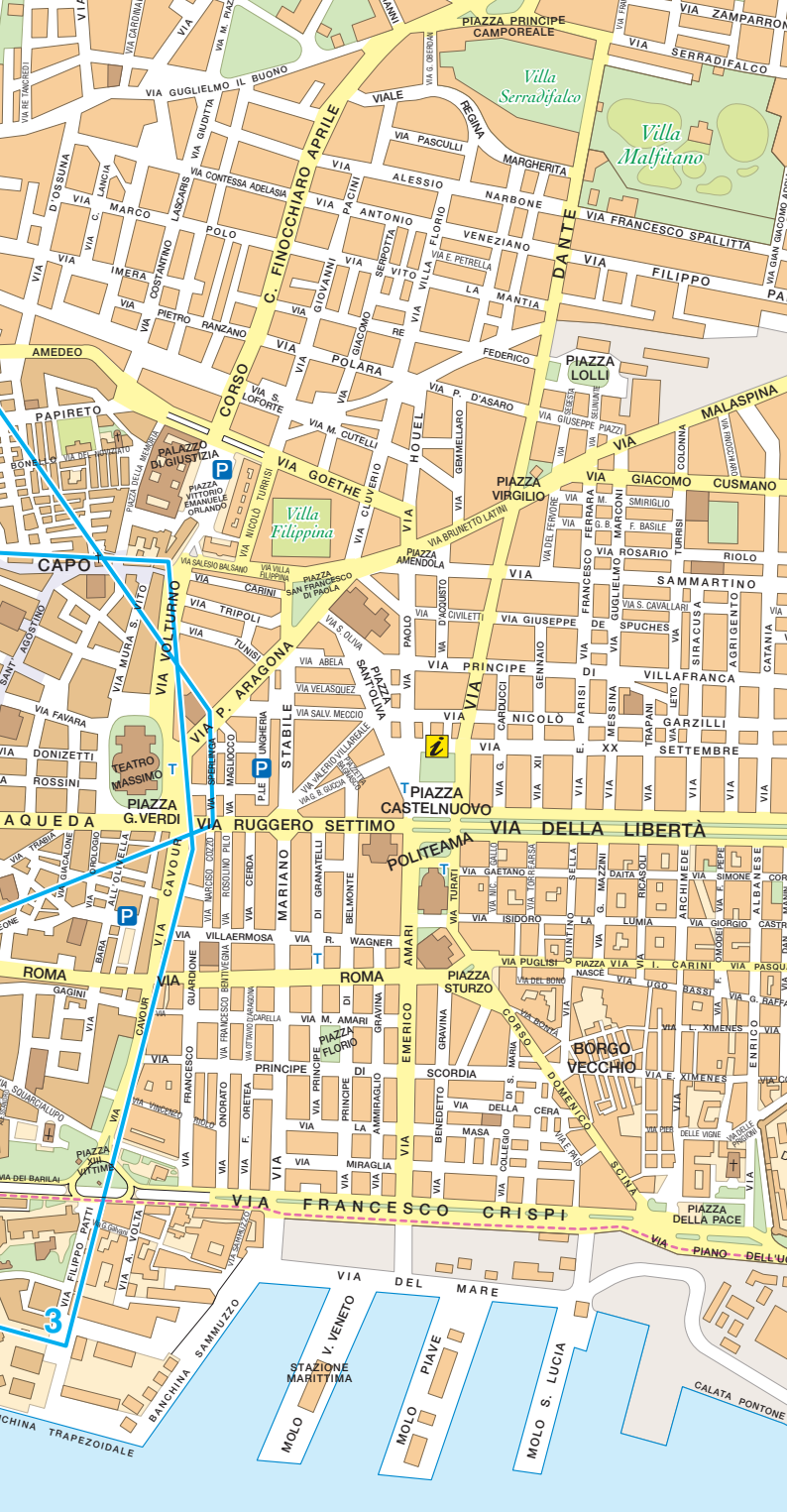
[www.palermotourism.com](http://www.palermotourism.com)



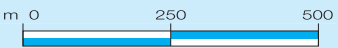








PORTO



SUD



## Parks, Natural reservations and Protected areas

- |  |  |
|--|--|
| <b>1</b> Parco Regionale delle Madonie             | <b>10</b> Capo Rama (Terrasini)  |
| <b>2</b> Riserva Marina di Ustica (Ustica)         | <b>11</b> Serre della Pizzuta (Piana degli Albanesi)   |
| <b>3</b> Monte Pellegrino (Palermo)                | <b>12</b> Bosco della Ficuzza, Rocca Busambra, Bosco del Cappelliere and Gorgo del Drago (Marineo, Monreale e Mezzojuso) |
| <b>4</b> Capo Gallo (Palermo)                      | <b>13</b> Bagni di Cefalà Diana and Chiarastella (Cefalà Diana and Villafrati)   |
| <b>5</b> Grotta Molara (Palermo)                   | <b>14</b> Serre di Ciminna (Ciminna)   |
| <b>6</b> Grotta Conza (Palermo)                    |  |
| <b>7</b> Isola delle Femmine (Isola delle Femmine) |  |
| <b>8</b> Grotta dei Puntali (Carini)               |  |
| <b>9</b> Grotta di Carburangeli (Carini)           |  |

# The province of Palermo



- 15** Pizzo Cane, Pizzo Trigna, Grotta Mazzamuto (Altavilla Milicia, Trapani)
- 16** Ventimiglia di Sicilia, Caccamo, Baucina and Casteldaccia
- 17** Monte San Calogero (Termini Imerese, Caccamo and Sciara)
- 18** Bosco della Favara and Bosco Granza (Aliminusa, Cerda, Sclafani Bagni and Montemaggiore Belsito)
- 19** Monte Carcaci (Prizzi and Castronovo di Sicilia)
- 20** Monti di Palazzo Adriano and Valle del Sosio (Palazzo Adriano, Chiusa Sclafani, Burgio e Bivona)
- 21** Monte Genuardo and S. Maria del Bosco (Contessa Entellina, Giuliana and Sambuca di Sicilia)
- 22** Grotta di Entella (Contessa Entellina)
- 23** Isola di Ustica (Ustica)



*Quicksicily*<sup>®</sup>

Studio grafico Pietro Lupo  
Palermo

[www.quicksicily.com](http://www.quicksicily.com)

[info@quicksicily.com](mailto:info@quicksicily.com)   [asplupo@libero.it](mailto:asplupo@libero.it)

vers 070517